



Mouse Monoclonal Antibody **Albumin** conjugated to Sepharose Beads

CatalogNo: **ANT8377-M**

Size 200ul

Storage Store at 4 °C for frequent use

Description

This Antagene antibody is immobilized by the covalent reaction of hydrazinonicotinamide-modified antibody with formylbenzamide-modified beads. It is useful for immunoprecipitation.

Albumin (ANT0061R) Rabbit mAb

Formulation: Each vial contains 1mg/ml Magnetic Bead in PBS, pH 7.2, 0.05mg ANaN3.

Host Species

- Rabbit
- Human, Mouse, Rat,

Reactivity

- WB, IHC, IF, IP, ELISA

Applications

MW

- 69kD (Calculated)
 - IgG, Kappa
- 69kD (Observed)

Isotype

Recommended Dilution Ratios

IP

Basic Information

Clonality	Monoclonal
-----------	------------

Clone Number	ANT0061R
--------------	----------

Immunogen Information

Specificity Endogenous

Gene name ALB

Protein Name Serum albumin

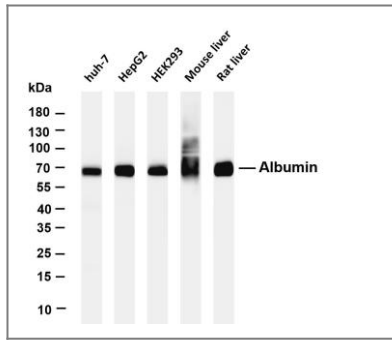
Organism	Gene ID	UniProt ID
Human	213 ;	P02768 ;
Mouse		P07724 ;

Cellular Localization Secreted

Tissue specificity Plasma.

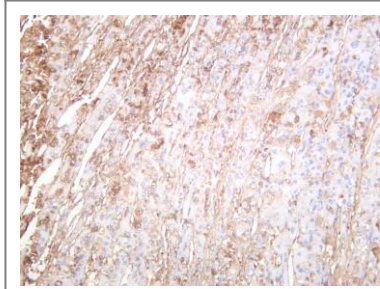
Function Caution:A peptide arising from positions 166 to 174 was originally (PubMed:3087352 and PubMed:2437111) termed neurotensin-related peptide (NRP) or kinetensin and was thought to regulates fat digestion, lipid absorption, and blood flow.,disease:A variant structure of albumin could lead to increased binding of zinc resulting in an asymptomatic augmentation of zinc concentration in the blood [MIM:194470].,disease:Defects in ALB are a cause of familial dysalbuminemic hyperthyroxinemia (FDH) [MIM:103600]. FDH is a form of euthyroid hyperthyroxinemia that is due to increased affinity of ALB for T(4). It is the most common cause of inherited euthyroid hyperthyroxinemia in Caucasian population.,Function:Serum albumin, the main protein of plasma, has a good binding capacity for water, Ca(2+), Na(+), K(+), fatty acids, hormones, bilirubin and drugs. Its main function is the regulation of the colloidal osmotic pressure of blood.,miscellaneous:Acetylated on Lys-223 by acetylsalicylic acid.,online information:Serum albumin entry,polymorphism:The sequence shown is that of variant albumin A.,ANTM:Glycated in diabetic patients.,PTM:Kenitra variant is partially Oglycosylated at Thr-620. It has two new disulfide bonds Cys-600 to Cys-602 and Cys-601 to Cys-606.,similarity:Belongs to the ALB/AFP/VDB family.,similarity:Contains 3 albumin domains.,tissue specificity:Plasma.,

Validation Data

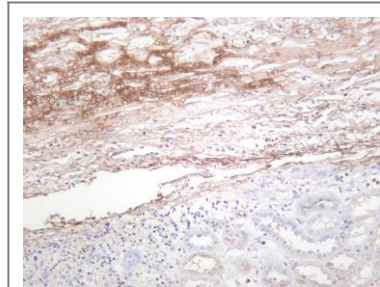


Various whole cell lysates were separated by 4-20% SDS-PAGE, and the membrane was blotted with anti-Albumin (ANT0061R) antibody. The HRPconjugated Goat anti-Rabbit IgG(H + L) antibody was used to detect the antibody. Lane 1: huh-7 Lane 2: HepG2 Lane 3: HEK293 Lane 4: Mouse liver

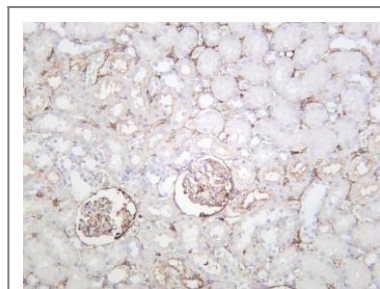
Lane 5: Rat liver Predicted band size: 69kDa Observed band size: 69kDa



Human hepatocellular carcinoma was stained with anti-Albumin (ANT0061R) rabbit antibody



Human kidney was stained with anti-Albumin (ANT0061R) rabbit antibody



Rat kidney was stained with anti-Albumin (ANT0061R) rabbit antibody

For Research use only, not for diagnostics and clinical use
Contact Antagene Inc Tel 1-866-964-2589 Email: info@antageneinc.com