



Mouse Monoclonal Antibody **ERK5** conjugated to Sepharose Beads

CatalogNo: **ANT8375-S**

Size 200ul

Storage Store at 4 °C for frequent use

Description

This Antagene antibody is immobilized via covalent binding of primary amino groups to N-hydroxysuccinimide (NHS)-activated sepharose beads. It is useful for immunoprecipitation assays.

ERK5 (ANT0056R) Rabbit mAb

Formulation: 50% slurry in PBS pH 7.2 with 0.01mg NaN₃ preservative.

Host Species

- Rabbit
- Human, Mouse, Rat,

Reactivity

- WB, IF, IP, ELISA

Applications

MW

- 88kD (Calculated)
 - IgG, Kappa
- 115kD (Observed)

Isotype

Recommended Dilution Ratios

IP

Basic Information

Clonality Monoclonal

Clone Number ANT0056R

Immunogen Information

Specificity Endogenous

Gene name MAPK7,ERK5

Protein Name Mitogen-activated protein kinase 7

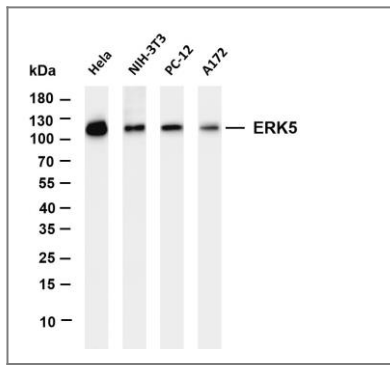
| Organism | Gene ID | UniProt ID |
|----------|------------------------|--------------------------|
| Human | 5598 ; | Q13164 ; |
| Mouse | | Q9WVS8 ; |
| Rat | | POC865 ; |

Cellular Localization Cytoplasm, Nucleus

Tissue specificity Expressed in many adult tissues. Abundant in heart, placenta, lung, kidney and skeletal muscle. Not detectable in liver.

Function Catalytic activity:ATP + a protein = ADP + a phosphoprotein.,cofactor:Magnesium.,domain:The second proline-rich region may interact with actin targeting the kinase to a specific location in the cell.,domain:The TXY motif contains the threonine and tyrosine residues whose phosphorylation activates the MAP kinases.,enzyme regulation:Activated by tyrosine and threonine phosphorylation (By similarity). Activated in response to hyperosmolarity, hydrogen peroxide, and epidermal growth factor (EGF).,Function:Plays a role in various cellular processes such as proliferation, differentiation and cell survival. The upstream activator of MAPK7 is the MAPK kinase MAP2K5. Upon activation, it translocates to the nucleus and phosphorylates various downstream targets including MEF2C. EGF activates MAPK7 through a Ras-independent and MAP2K5-dependent pathway. May have a role in muscle cell differentiation. May be important for endothelial function and maintenance of blood vessel integrity. MAP2K5 and MAPK7 interact specifically with one another and not with MEK1/ERK1 or MEK2/ERK2 pathways.,ANTM:Dually phosphorylated on Thr-219 and Tyr-221, which activates the enzyme (By similarity). Autophosphorylated in vitro on threonine and tyrosine residues when the Cterminal part of the kinase, which could have a regulatory role, is absent.,similarity:Belongs to the protein kinase superfamily. CMGC Ser/Thr protein kinase family. MAP kinase subfamily.,similarity:Contains 1 protein kinase domain.,subcellular location:Translocates to the nucleus upon activation.,subunit:Interacts with MAP2K5. Forms oligomers (By similarity). Interacts with MEF2A, MEF2C and MEF2D; the interaction phosphorylates the MEF2s and enhances transcriptional activity of MEF2A, MEF2C but not MEF2D.,tissue specificity:Expressed in many adult tissues. Abundant in heart, placenta, lung, kidney and skeletal muscle. Not detectable in liver.,

Validation Data



Various whole cell lysates were separated by 4-20% SDS-PAGE, and the membrane was blotted with anti-ERK5 (ANT0056R) antibody. The HRPconjugated Goat anti-Rabbit IgG(H + L) antibody was used to detect the antibody. Lane 1: HeLa Lane 2: NIH-3T3 Lane 3: PC-12 Lane 4: A172 Predicted band size: 88kDa Observed band size: 115kDa

For Research use only, not for diagnostics and clinical use
Contact Antagene Inc Tel 1-866-964-2589 Email: info@antageneinc.com