



Mouse Monoclonal Antibody **VE Cadherin** conjugated to Sepharose Beads

CatalogNo: **ANT8373-S**

Size 200ul

Storage Store at 4 °C for frequent use

Description

This Antagene antibody is immobilized via covalent binding of primary amino groups to N-hydroxysuccinimide (NHS)-activated sepharose beads. It is useful for immunoprecipitation assays.

VE Cadherin (ANT0053R) Rabbit mAb

Formulation: 50% slurry in PBS pH 7.2 with 0.01mg NaN₃ preservative.

Host Species

- Rabbit

MW

- 88kD (Calculated)
- 90-140kD (Observed)

Reactivity

- Mouse,Rat,

Isotype

- IgG,Kappa

Applications

- WB,IHC,IF,IP,ELISA

Recommended Dilution Ratios

IP

Basic Information

Clonality

Monoclonal

Clone Number ANT0053R

Immunogen Information

Specificity Endogenous

Gene name CDH5

Protein Name Cadherin-5

Organism	Gene ID	UniProt ID
Human	1003 ;	P33151 ;
Mouse	12562 ;	P55284 ;

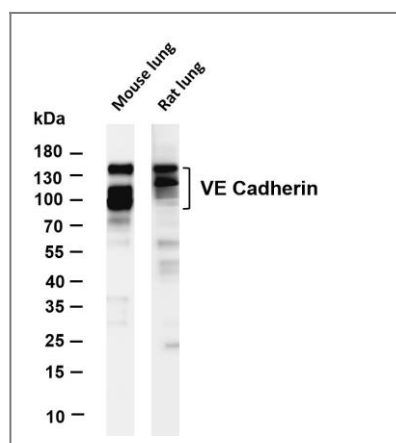
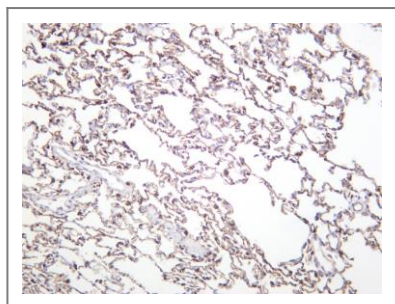
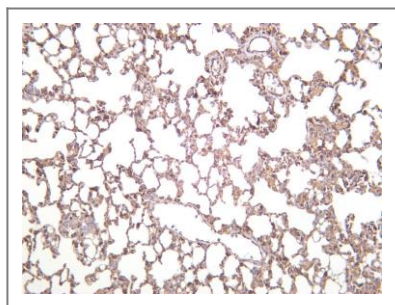
Cellular Localization Membrane

Tissue specificity Endothelial tissues and brain.

Function Function:Cadherins are calcium dependent cell adhesion proteins.,Function:Cadherins are calcium dependent cell adhesion proteins. They preferentially interact with themselves in a homophilic manner in connecting cells; cadherins may thus contribute to the sorting of heterogeneous cell types. This cadherin may play a important role in endothelial cell biology through control of the cohesion and organization of the intercellular junctions. It associates with alpha-catenin forming a link to the cytoskeleton.,similarity:Contains 5 cadherin domains.,subcellular location:Found at cell-cell boundaries and probably at cellmatrix boundaries.,tissue specificity:Endothelial tissues and brain.,

Validation Data

Mouse lung was stained with anti-VE Cadherin (ANT0053R) rabbit antibody



Rat lung was stained with anti-VE Cadherin (ANT0053R) rabbit antibody

Various whole cell lysates were separated by 4-20% SDS-PAGE, and the membrane was blotted with anti-VE Cadherin (ANT0053R) antibody. The HRPconjugated Goat anti-Rabbit IgG(H + L) antibody was used to detect the antibody. Lane 1: Mouse lung Lane 2: Rat lung Predicted band size: 88kDa Observed band size: 90-140kDa

For Research use only, not for diagnostics and clinical use
Contact Antagene Inc Tel 1-866-964-2589 Email: info@antageneinc.com