



## ATP-Citrate Lyase (ANT0052R) Rabbit mAb

CatalogNo: ANT8372 **Recombinant** 

Formulation: PBS,50%glycerol,0.05%Proclin 300,0.05%BSA  
Quantity : 100 ug/vial

### Host Species

- Rabbit

### MW

- 121kD (Calculated)  
121kD (Observed)

### Reactivity

- Human,Mouse,Rat,

### Isotype

- IgG,Kappa

### Applications

- WB,IHC,IF,IP,ELISA

## Recommended Dilution Ratios

IHC 1:2000-1:10000

WB 1:2000-1:10000

IF 1:200-1:1000

ELISA 1:5000-1:20000

IP 1:50-1:200

## Storage

**Storage\*** -15°C to -25°C/1 year(Do not lower than -25°C)

## Basic Information

**Clonality** Monoclonal

**Clone Number** ANT0052R

Endogenous

---

## Target Information

**Gene name** ACLY

**Protein Name** ATP-citrate synthase

Organism	Gene ID	UniProt ID
Human	<a href="#">47</a> ;	<a href="#">P53396</a> ;
Mouse	<a href="#">104112</a> ;	<a href="#">Q91V92</a> ;
Rat	<a href="#">24159</a> ;	<a href="#">P16638</a> ;

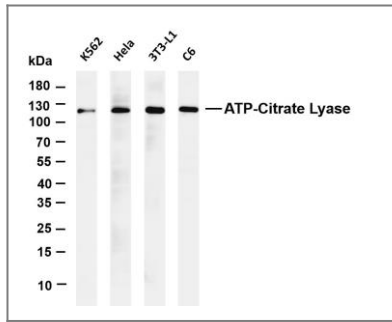
**Cellular Localization** Cytoplasm

**Tissue specificity** Brain,Epithelium,Hippocampus,Liver,Lymph,Platelet,

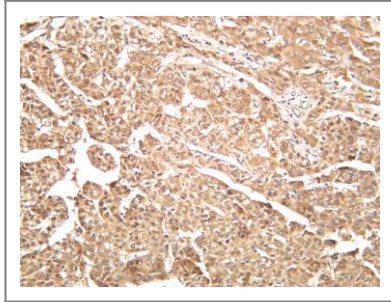
**Function** Catalytic activity:ADP + phosphate + acetyl-CoA + oxaloacetate = ATP + citrate + CoA.,Function:ATP citrate-lyase is the primary enzyme responsible for the synthesis of cytosolic acetyl-CoA in many tissues. Has a central role in de novo lipid synthesis. In nervous tissue it may be involved in the biosynthesis of acetylcholine.,similarity:In the Cterminal section; belongs to the succinate/malate CoA ligase alpha subunit family.,similarity:In the N-terminal section; belongs to the succinate/malate CoA ligase beta subunit family.,subunit:Homotetramer,

---

## Validation Data



Various whole cell lysates were separated by 4-20% SDS-PAGE, and the membrane was blotted with anti-ATP-Citrate Lyase (ANT0052R) antibody. The HRP-conjugated Goat anti-Rabbit IgG(H + L) antibody was used to detect the antibody. Lane 1: K562 Lane 2: HeLa Lane 3: 3T3-L1 Lane 4: C6 Predicted band size: 121kDa Observed band size: 121kDa



Human hepatocellular carcinoma was stained with anti-ATP-Citrate Lyase (ANT0052R) rabbit antibody

For Research use only, not for diagnostics and clinical use

Contact Antagene Inc Tel 1-866-964-2589 Email: [info@antageneinc.com](mailto:info@antageneinc.com)