



Mouse Monoclonal Antibody **ATP-Citrate Lyase** conjugated to Sepharose Beads

CatalogNo: **ANT8372-S**

Size 200ul

Storage Store at 4 °C for frequent use

Description

This Antagene antibody is immobilized via covalent binding of primary amino groups to N-hydroxysuccinimide (NHS)-activated sepharose beads. It is useful for immunoprecipitation assays.

ATP-Citrate Lyase (ANT0052R) Rabbit mAb

Formulation: 50% slurry in PBS pH 7.2 with 0.01mg NaN3a3 preservative.

Host Species

- Rabbit

MW

- 121kD (Calculated)
- 121kD (Observed)

Reactivity

- Human,Mouse,Rat,

Isotype

- IgG,Kappa

Applications

- WB,IHC,IF,IP,ELISA

Recommended Dilution Ratios

IP

Basic Information

Clonality Monoclonal

Clone Number ANT0052R

Immunogen Information

Specificity Endogenous

Target Information

Gene name ACLY
Protein Name ATP-citrate synthase

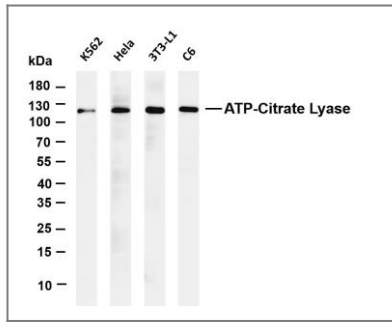
Organism	Gene ID	UniProt ID
Human	47;	P53396;
Mouse	104112;	Q91V92;
Rat	24159;	P16638;

Cellular Cytoplasm
Localization

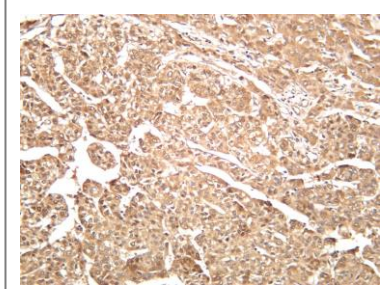
Tissue specificity Brain,Epithelium,Hippocampus,Liver,Lymph,Platelet,

Function Catalytic activity:ADP + phosphate + acetyl-CoA + oxaloacetate = ATP + citrate + CoA.,Function:ATP citrate-lyase is the primary enzyme responsible for the synthesis of cytosolic acetyl-CoA in many tissues. Has a central role in de novo lipid synthesis. In nervous tissue it may be involved in the biosynthesis of acetylcholine.,similarity:In the Cterminal section; belongs to the succinate/malate CoA ligase alpha subunit family.,similarity:In the N-terminal section; belongs to the succinate/malate CoA ligase beta subunit family.,subunit:Homotetramer.,

Validation Data



Various whole cell lysates were separated by 4-20% SDS-PAGE, and the membrane was blotted with anti-ATP-Citrate Lyase (ANT0052R) antibody. The HRP-conjugated Goat anti-Rabbit IgG(H + L) antibody was used to detect the antibody. Lane 1: K562 Lane 2: HeLa Lane 3: 3T3-L1 Lane 4: C6 Predicted band size: 121kDa Observed band size: 121kDa



Human hepatocellular carcinoma was stained with anti-ATP-Citrate Lyase (ANT0052R) rabbit antibody

For Research use only, not for diagnostics and clinical use

Contact Antagene Inc Tel 1-866-964-2589 Email: info@antageneinc.com