



Mouse Monoclonal Antibody **ATP-Citrate Lyase** conjugated to Sepharose Beads

CatalogNo: **ANT8372-M**

Size 200ul

Storage Store at 4 °C for frequent use

### Description

This Antagene antibody is immobilized by the covalent reaction of hydrazinonicotinamide-modified antibody with formylbenzamide-modified beads. It is useful for immunoprecipitation.

**ATP-Citrate Lyase (ANT0052R) Rabbit mAb**

Formulation: Each vial contains 1mg/ml Magnetic Bead in PBS, pH 7.2, 0.05mg ANaN3.

#### Host Species

- Rabbit

#### Reactivity

- Human,Mouse,Rat,

#### Applications

- WB,IHC,IF,IP,ELISA

#### MW

- 121kD (Calculated)
- 121kD (Observed)

#### Isotype

- IgG,Kappa

## Recommended Dilution Ratios

### IP

## Basic Information

**Clonality** Monoclonal

**Clone Number** ANT0052R

# Immunogen Information

Specificity      Endogenous

## Target Information

Gene name      ACLY  
Protein Name      ATP-citrate synthase

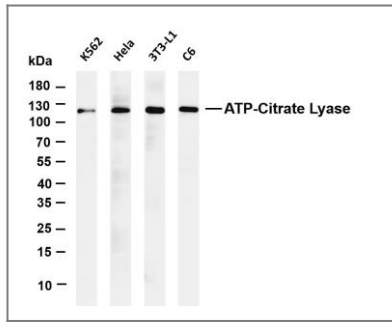
Organism	Gene ID	UniProt ID
Human	<a href="#">47;</a>	<a href="#">P53396;</a>
Mouse	<a href="#">104112;</a>	<a href="#">Q91V92;</a>
Rat	<a href="#">24159;</a>	<a href="#">P16638;</a>

Cellular      Cytoplasm  
Localization

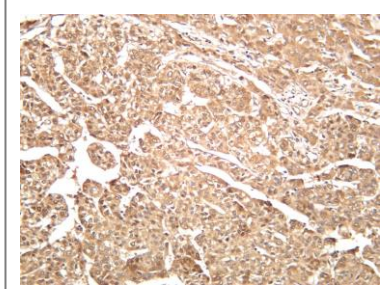
Tissue specificity      Brain,Epithelium,Hippocampus,Liver,Lymph,Platelet,

Function      Catalytic activity:ADP + phosphate + acetyl-CoA + oxaloacetate = ATP + citrate + CoA.,Function:ATP citrate-lyase is the primary enzyme responsible for the synthesis of cytosolic acetyl-CoA in many tissues. Has a central role in de novo lipid synthesis. In nervous tissue it may be involved in the biosynthesis of acetylcholine.,similarity:In the Cterminal section; belongs to the succinate/malate CoA ligase alpha subunit family.,similarity:In the N-terminal section; belongs to the succinate/malate CoA ligase beta subunit family.,subunit:Homotetramer.,

## Validation Data



Various whole cell lysates were separated by 4-20% SDS-PAGE, and the membrane was blotted with anti-ATP-Citrate Lyase (ANT0052R) antibody. The HRP-conjugated Goat anti-Rabbit IgG(H + L) antibody was used to detect the antibody. Lane 1: K562 Lane 2: HeLa Lane 3: 3T3-L1 Lane 4: C6 Predicted band size: 121kDa Observed band size: 121kDa



Human hepatocellular carcinoma was stained with anti-ATP-Citrate Lyase (ANT0052R) rabbit antibody

For Research use only, not for diagnostics and clinical use

Contact Antagene Inc Tel 1-866-964-2589 Email: [info@antageneinc.com](mailto:info@antageneinc.com)