

## ALK (ANT0048R) Rabbit mAb

CatalogNo: ANT8368 **Recombinant** 

Formulation: PBS,50%glycerol,0.05%Proclin 300,0.05%BSA  
Quantity : 100 ug/vial

### Host Species

- Rabbit

### MW

- 177kD (Calculated)  
220kD (Observed)

### Reactivity

- Human,

### Isotype

- IgG,Kappa

### Applications

- WB,IHC,IF,IP,ELISA

## Recommended Dilution Ratios

IHC 1:200-1:1000

WB 1:2000-1:10000

IF 1:200-1:1000

ELISA 1:5000-1:20000

IP 1:50-1:200

## Storage

**Storage\*** -15°C to -25°C/1 year(Do not lower than -25°C)

## Basic Information

**Clonality** Monoclonal

**Clone Number** ANT0048R

## Target Information

Endogenous

Gene name ALK

Protein Name ALK tyrosine kinase receptor

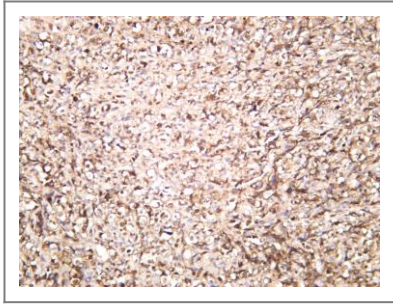
Organism	Gene ID	UniProt ID
Human	<a href="#">238;</a>	<a href="#">Q9UM73;</a>
Mouse		<a href="#">P97793;</a>

Cellular Localization Membrane

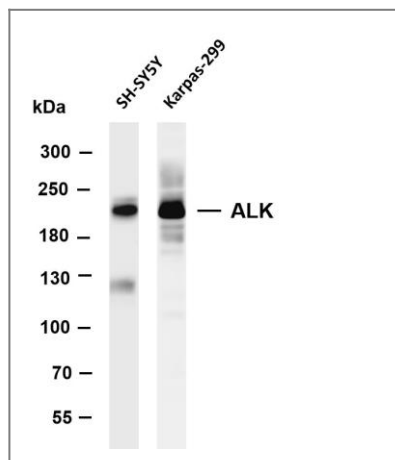
Tissue specificity Expressed in brain and CNS. Also expressed in the small intestine and testis, but not in normal lymphoid cells.

Function Catalytic activity:ATP + a [protein]-L-tyrosine = ADP + a [protein]-L-tyrosine phosphate.,disease:A chromosomal aberration involving ALK is associated with anaplastic large-cell lymphoma (ALCL). Translocation t(2;17)(p23;q25) with ALO17.,disease:A chromosomal aberration involving ALK is associated with inflammatory myofibroblastic tumors (IMTs). Translocation t(2;11)(p23;p15) with CARS; translocation t(2;4)(p23;q21) with SEC31A.,disease:A chromosomal aberration involving ALK is found in a form of non-Hodgkin lymphoma. Translocation t(2;5)(p23;q35) with NPM1. The resulting chimeric NPM1-ALK protein homodimerize and the kinase becomes constitutively activated. The constitutively active fusion proteins are responsible for 5-10% of non-Hodgkin lymphomas.,Function:Orphan receptor with a tyrosine-protein kinase activity. Appears to play an important role in the normal development and function of the nervous system. Phosphorylates almost exclusively at the first tyrosine of the Y-x-x-x-Y-Y motif.,ANTM:Nglycosylated.,similarity:Belongs to the protein kinase superfamily. Tyr protein kinase family. Insulin receptor subfamily.,similarity:Contains 1 LDL-receptor class A domain.,similarity:Contains 1 protein kinase domain.,similarity:Contains 2 MAM domains.,subunit:Homodimer. When bound to ligand.,tissue specificity:Expressed in brain and CNS. Also expressed in the small intestine and testis, but not in normal lymphoid cells.,

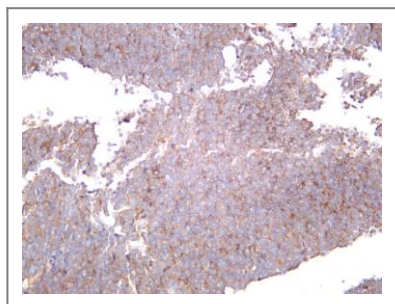
## Validation Data



Human non-hodgkin lymphoma was stained with anti-ALK (PT0548R) rabbit antibody



Various whole cell lysates were separated by 4-8% SDS-PAGE, and the membrane was blotted with anti-ALK (ANT0048R) antibody. The HRPconjugated Goat anti-Rabbit IgG(H + L) antibody was used to detect the antibody. Lane 1: SH-SY5Y Lane 2: Karpas-299 Predicted band size: 177kDa  
Observed band size: 220kDa



Human neuroblastoma was stained with anti-ALK (ANT0048R) rabbit antibody

For Research use only, not for diagnostics and clinical use  
Contact Antagene Inc Tel 1-866-964-2589 Email: [info@antageneinc.com](mailto:info@antageneinc.com)