



Mouse Monoclonal Antibody **ALK** conjugated to Sepharose Beads

CatalogNo: **ANT8368-S**

Size 200ul

Storage Store at 4 °C for frequent use

Description

This Antagene antibody is immobilized via covalent binding of primary amino groups to N-hydroxysuccinimide (NHS)-activated sepharose beads. It is useful for immunoprecipitation assays.

ALK (ANT0048R) Rabbit mAb

Formulation: 50% slurry in PBS pH 7.2 with 0.01mg NaN₃ preservative.

Host Species

- Rabbit

MW

- 177kD (Calculated)
- 220kD (Observed)

Reactivity

- Human,

Isotype

- IgG,Kappa

Applications

- WB,IHC,IF,IP,ELISA

Recommended Dilution Ratios

IP

Basic Information

Clonality

Monoclonal

Clone Number ANT0048R

Immunogen Information

Specificity Endogenous

Gene name ALK

Protein Name ALK tyrosine kinase receptor

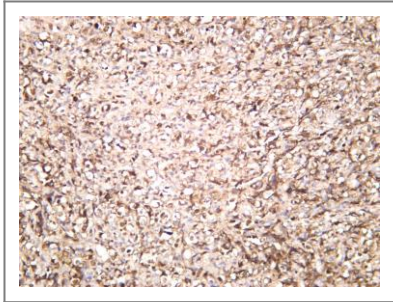
Organism	Gene ID	UniProt ID
Human	238;	Q9UM73;
Mouse		P97793;

Cellular Localization Membrane

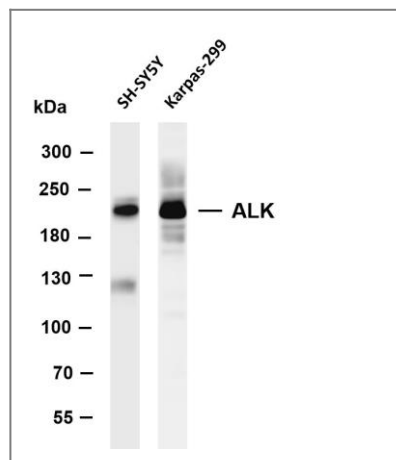
Tissue specificity Expressed in brain and CNS. Also expressed in the small intestine and testis, but not in normal lymphoid cells.

Function Catalytic activity:ATP + a [protein]-L-tyrosine = ADP + a [protein]-L-tyrosine phosphate.,disease:A chromosomal aberration involving ALK is associated with anaplastic large-cell lymphoma (ALCL). Translocation t(2;17)(p23;q25) with ALO17.,disease:A chromosomal aberration involving ALK is associated with inflammatory myofibroblastic tumors (IMTs). Translocation t(2;11)(p23;p15) with CARS; translocation t(2;4)(p23;q21) with SEC31A.,disease:A chromosomal aberration involving ALK is found in a form of non-Hodgkin lymphoma. Translocation t(2;5)(p23;q35) with NPM1. The resulting chimeric NPM1-ALK protein homodimerize and the kinase becomes constitutively activated. The constitutively active fusion proteins are responsible for 5-10% of non-Hodgkin lymphomas.,Function:Orphan receptor with a tyrosine-protein kinase activity. Appears to play an important role in the normal development and function of the nervous system. Phosphorylates almost exclusively at the first tyrosine of the Y-x-x-x-Y-Y motif.,ANTM:Nglycosylated.,similarity:Belongs to the protein kinase superfamily. Tyr protein kinase family. Insulin receptor subfamily.,similarity:Contains 1 LDL-receptor class A domain.,similarity:Contains 1 protein kinase domain.,similarity:Contains 2 MAM domains.,subunit:Homodimer. When bound to ligand.,tissue specificity:Expressed in brain and CNS. Also expressed in the small intestine and testis, but not in normal lymphoid cells.,

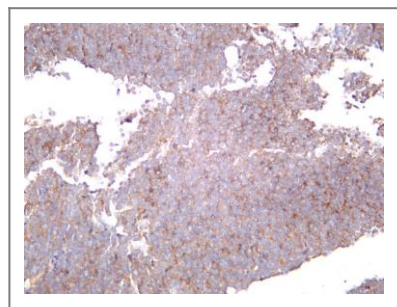
Validation Data



Human non-hodgkin lymphoma was stained with anti-ALK (PT0548R) rabbit antibody



Various whole cell lysates were separated by 4-8% SDS-PAGE, and the membrane was blotted with anti-ALK (ANT0048R) antibody. The HRPconjugated Goat anti-Rabbit IgG(H + L) antibody was used to detect the antibody. Lane 1: SH-SY5Y Lane 2: Karpas-299 Predicted band size: 177kDa
Observed band size: 220kDa



Human neuroblastoma was stained with anti-ALK (ANT0048R) rabbit antibody

For Research use only, not for diagnostics and clinical use
Contact Antagene Inc Tel 1-866-964-2589 Email: info@antageneinc.com