



Mouse Monoclonal Antibody **ALK** conjugated to Sepharose Beads

CatalogNo: **ANT8368-M**

Size 200ul

Storage Store at 4 °C for frequent use

### Description

This Antagene antibody is immobilized by the covalent reaction of hydrazinonicotinamide-modified antibody with formylbenzamide-modified beads. It is useful for immunoprecipitation.

**ALK (ANT0048R) Rabbit mAb**

Formulation: Each vial contains 1mg/ml Magnetic Bead in PBS, pH 7.2, 0.05mg ANaN3.

#### Host Species

- Rabbit

#### Reactivity

- Human,

#### Applications

- WB,IHC,IF,IP,ELISA

#### MW

- 177kD (Calculated)
- 220kD (Observed)

#### Isotype

- IgG,Kappa

## Recommended Dilution Ratios

### IP

## Basic Information

Clonality

Monoclonal

Clone Number      ANT0048R

**Immunogen Information**

Specificity      Endogenous

Gene name      ALK

Protein Name      ALK tyrosine kinase receptor

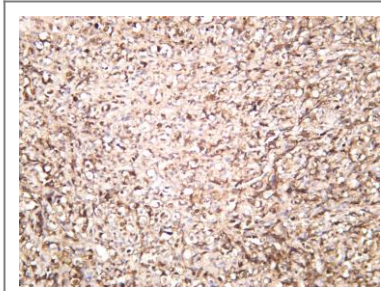
Organism	Gene ID	UniProt ID
Human	<a href="#">238;</a>	<a href="#">Q9UM73;</a>
Mouse		<a href="#">P97793;</a>

Cellular      Membrane  
Localization

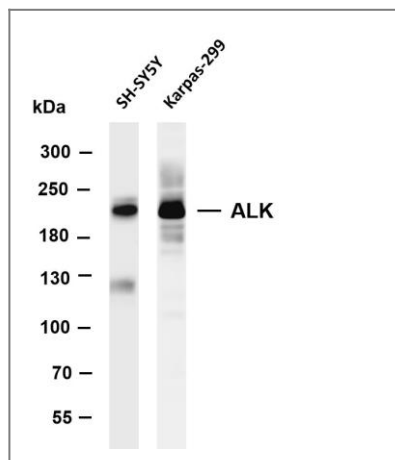
Tissue specificity      Expressed in brain and CNS. Also expressed in the small intestine and testis, but not in normal lymphoid cells.

Function      Catalytic activity:ATP + a [protein]-L-tyrosine = ADP + a [protein]-L-tyrosine phosphate.,disease:A chromosomal aberration involving ALK is associated with anaplastic large-cell lymphoma (ALCL). Translocation t(2;17)(p23;q25) with ALO17.,disease:A chromosomal aberration involving ALK is associated with inflammatory myofibroblastic tumors (IMTs). Translocation t(2;11)(p23;p15) with CARS; translocation t(2;4)(p23;q21) with SEC31A.,disease:A chromosomal aberration involving ALK is found in a form of non-Hodgkin lymphoma. Translocation t(2;5)(p23;q35) with NPM1. The resulting chimeric NPM1-ALK protein homodimerize and the kinase becomes constitutively activated. The constitutively active fusion proteins are responsible for 5-10% of non-Hodgkin lymphomas.,Function:Orphan receptor with a tyrosine-protein kinase activity. Appears to play an important role in the normal development and function of the nervous system. Phosphorylates almost exclusively at the first tyrosine of the Y-x-x-x-Y-Y motif.,ANTM:Nglycosylated.,similarity:Belongs to the protein kinase superfamily. Tyr protein kinase family. Insulin receptor subfamily.,similarity:Contains 1 LDL-receptor class A domain.,similarity:Contains 1 protein kinase domain.,similarity:Contains 2 MAM domains.,subunit:Homodimer. When bound to ligand.,tissue specificity:Expressed in brain and CNS. Also expressed in the small intestine and testis, but not in normal lymphoid cells.,

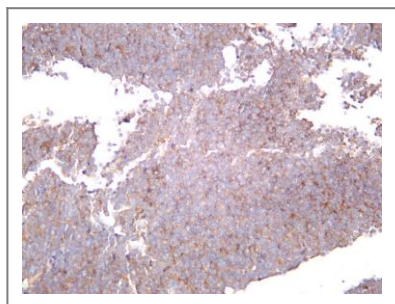
## Validation Data



Human non-hodgkin lymphoma was stained with anti-ALK (PT0548R) rabbit antibody



Various whole cell lysates were separated by 4-8% SDS-PAGE, and the membrane was blotted with anti-ALK (ANT0048R) antibody. The HRPconjugated Goat anti-Rabbit IgG(H + L) antibody was used to detect the antibody. Lane 1: SH-SY5Y Lane 2: Karpas-299 Predicted band size: 177kDa  
Observed band size: 220kDa



Human neuroblastoma was stained with anti-ALK (ANT0048R) rabbit antibody

For Research use only, not for diagnostics and clinical use  
Contact Antagene Inc Tel 1-866-964-2589 Email: [info@antageneinc.com](mailto:info@antageneinc.com)