

## CD68 (ANT0047R) Rabbit mAb

CatalogNo: ANT8367 **Recombinant** 

Formulation: PBS,50%glycerol,0.05%Proclin 300,0.05%BSA  
Quantity : 100 ug/vial

### Host Species

- Rabbit
- Mouse,Rat,
- WB,IHC,IF,IP,ELISA

### Reactivity

### Applications

### MW

- 37kD (Calculated)
  - IgG,Kappa
- 100kD (Observed)

### Isotype

## Recommended Dilution Ratios

IHC 1:500-1:2000

WB 1:2000-1:10000

IF 1:200-1:1000

ELISA 1:5000-1:20000

IP 1:50-1:200

## Storage

**Storage\*** -15°C to -25°C/1 year(Do not lower than -25°C)

## Basic Information

**Clonality** Monoclonal

**Clone Number** ANT0047R

## Target Information

Endogenous

Gene name CD68

Protein Name Macrosialin

Organism	Gene ID	UniProt ID
Human	<a href="#">968</a> ;	<a href="#">P34810</a> ;
Mouse	<a href="#">12514</a> ;	<a href="#">P31996</a> ;

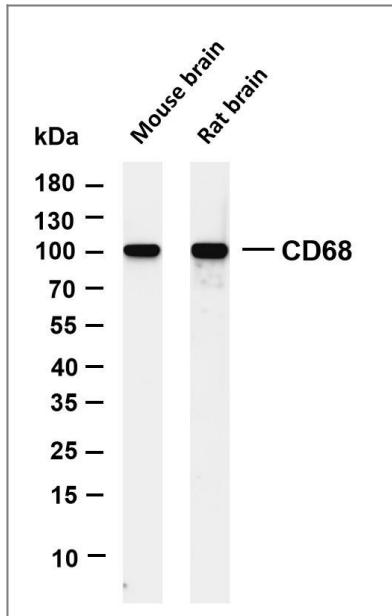
Cellular Localization Membrane

**Tissue specificity** Highly expressed by blood monocytes and tissue macrophages. Also expressed in lymphocytes, fibroblasts and endothelial cells. Expressed in many tumor cell lines which could allow them to attach to selectins on vascular endothelium, facilitating their dissemination to secondary sites.

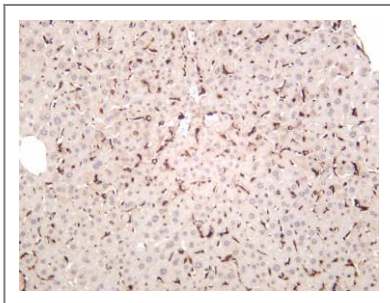
**Function** Function:Could play a role in phagocytic activities of tissue macrophages, both in intracellular lysosomal metabolism and extracellular cell-cell and cell-pathogen interactions. Bind to tissue- and organ-specific lectins or selectins, allowing homing of macrophage subsets to particular sites. Rapid recirculation of CD68 from endosomes, lysosomes to the plasma membrane may allow macrophages to crawl over selectin bearing substrates or other cells.,ANTM:N- and O-glycosylated.,similarity:Belongs to the LAMP family.,tissue specificity:Highly expressed by blood monocytes and tissue macrophages. Also expressed in many tumor cell lines which could allow them to attach to selectins on vascular endothelium, facilitating their dissemination to secondary sites.,

---

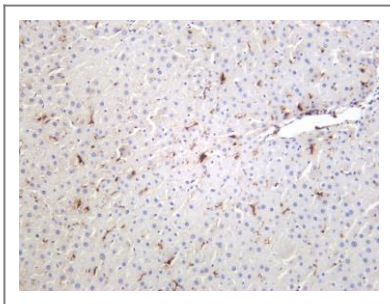
## Validation Data



Various whole cell lysates were separated by 4-20% SDS-PAGE, and the membrane was blotted with anti-CD68 (ANT0047R) antibody. The HRPconjugated Goat anti-Rabbit IgG(H + L) antibody was used to detect the antibody. Lane 1: Mouse brain Lane 2: Rat brain  
Predicted band size: 37kDa Observed band size: 100kDa



Mouse liver was stained with anti-CD68 (ANT0047R)



rabbit antibodyRat liver was stained with anti-CD68 (ANT0047R) rabbit antibody

For Research use only, not for diagnostics and clinical use

Contact Antagene Inc Tel 1-866-964-2589 Email: [info@antageneinc.com](mailto:info@antageneinc.com)