

p21 (ANT0044R) Rabbit mAb

CatalogNo: ANT8364 **Recombinant** 

Formulation: PBS,50%glycerol,0.05%Proclin 300,0.05%BSA
Quantity : 100 ug/vial

Host Species

- Rabbit
- Mouse,Rat,
- WB,IHC,IF,IP,ELISA

Reactivity

Applications

MW

- 18kD (Calculated)
 - IgG,Kappa
- 18kD (Observed)

Isotype

Recommended Dilution Ratios

IHC 1:500-1:2000

WB 1:2000-1:10000

IF 1:200-1:1000

ELISA 1:5000-1:20000

IP 1:50-1:200

Storage

Storage* -15°C to -25°C/1 year(Do not lower than -25°C)

Basic Information

Clonality Monoclonal

Clone Number ANT0044R

Endogenous

Target Information

Gene nameCDKN1A CAP20 CDKN1 CIP1 MDA6 PIC1 SDI1 WAF1

Protein Namep21

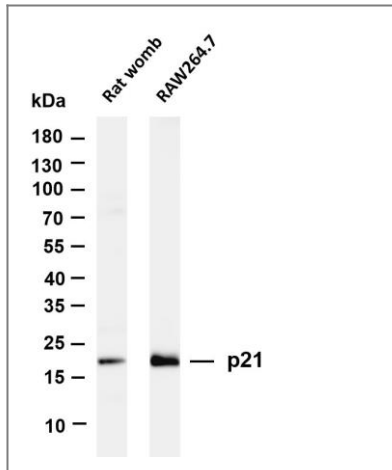
Organism	Gene ID	UniProt ID
Human	1026 ;	P38936 ;
Mouse	12575 ;	P39689 ;

Cellular LocalizationNucleus

Tissue specificityExpressed in all adult tissues, with 5-fold lower levels observed in the brain.

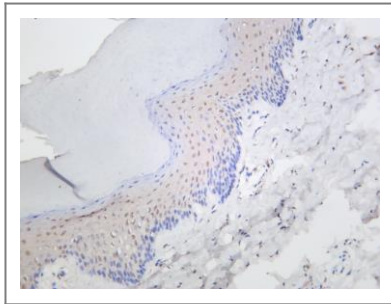
FunctionFunction:May be the important intermediate by which p53 mediates its role as an inhibitor of cellular proliferation in response to DNA damage. Binds to and inhibits cyclin-dependent kinase activity, preventing phosphorylation of critical cyclin-dependent kinase substrates and blocking cell cycle progression.,induction:By p53, mezerein (antileukemic compound) and interferon beta.,ANTM:Phosphorylation of Thr-145 by Akt or of Ser-146 by PKC impairs binding to PCNA.,similarity:Belongs to the CDI family.,tissue specificity:Expressed in all adult human tissues, with 5-fold lower levels observed in the brain.,

Validation Data



Various whole cell lysates were separated by 4-20% SDS-PAGE, and the membrane was blotted with anti-p21 (ANT0044R) antibody. The HRPconjugated Goat anti-Rabbit IgG(H + L) antibody was used to detect the antibody. Lane 1: Rat womb Lane 2: RAW264.7
Predicted band size: 18kDa
Observed band size: 18kDa

Rat skin was stained with anti-p21 (ANT0044R) rabbit antibody



For Research use only, not for diagnostics and clinical use
Contact Antagene Inc Tel 1-866-964-2589 Email: info@antageneinc.com