



Mouse Monoclonal Antibody **p21** conjugated to Sepharose Beads

CatalogNo: **ANT8364-S**

Size 200ul

Storage Store at 4 °C for frequent use

### Description

This Antagene antibody is immobilized via covalent binding of primary amino groups to N-hydroxysuccinimide (NHS)-activated sepharose beads. It is useful for immunoprecipitation assays.

**p21 (ANT0044R) Rabbit mAb**

Formulation: 50% slurry in PBS pH 7.2 with 0.01mg NaN<sub>3</sub> preservative.

### Host Species

- Rabbit
- Mouse,Rat,
- WB,IHC,IF,IP,ELISA

### Reactivity

### Applications

### MW

- 18kD (Calculated)
- 18kD (Observed)
- IgG,Kappa

### Isotype

## Recommended Dilution Ratios

### IP

## Basic Information

**Clonality** Monoclonal

**Clone Number** ANT0044R

# Immunogen Information

Specificity      Endogenous

## Target Information

Gene name      CDKN1A CAP20 CDKN1 CIP1 MDA6 PIC1 SDI1 WAF1

Protein Name      p21

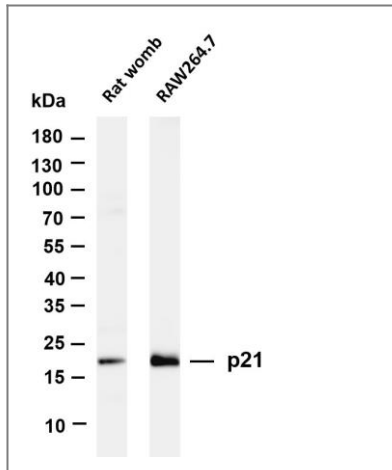
Organism	Gene ID	UniProt ID
Human	<a href="#">1026</a> ;	<a href="#">P38936</a> ;
Mouse	<a href="#">12575</a> ;	<a href="#">P39689</a> ;

Cellular      Nucleus  
Localization

Tissue specificity      Expressed in all adult tissues, with 5-fold lower levels observed in the brain.

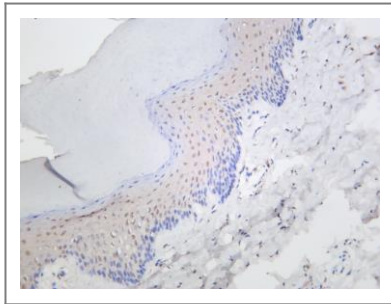
Function      Function:May be the important intermediate by which p53 mediates its role as an inhibitor of cellular proliferation in response to DNA damage. Binds to and inhibits cyclin-dependent kinase activity, preventing phosphorylation of critical cyclin-dependent kinase substrates and blocking cell cycle progression.,induction:By p53, mezerein (antileukemic compound) and interferon beta.,ANTM:Phosphorylation of Thr-145 by Akt or of Ser-146 by PKC impairs binding to PCNA.,similarity:Belongs to the CDI family.,tissue specificity:Expressed in all adult human tissues, with 5-fold lower levels observed in the brain.,

## Validation Data



Various whole cell lysates were separated by 4-20% SDS-PAGE, and the membrane was blotted with anti-p21 (ANT0044R) antibody. The HRPconjugated Goat anti-Rabbit IgG(H + L) antibody was used to detect the antibody. Lane 1: Rat womb Lane 2: RAW264.7  
Predicted band size: 18kDa  
Observed band size: 18kDa

Rat skin was stained with anti-p21 (ANT0044R) rabbit antibody



---

For Research use only, not for diagnostics and clinical use  
Contact Antagene Inc Tel 1-866-964-2589 Email: [info@antageneinc.com](mailto:info@antageneinc.com)