



Mouse Monoclonal Antibody **p21** conjugated to Sepharose Beads

CatalogNo: **ANT8364-M**

Size 200ul

Storage Store at 4 °C for frequent use

Description

This Antagene antibody is immobilized by the covalent reaction of hydrazinonicotinamide-modified antibody with formylbenzamide-modified beads. It is useful for immunoprecipitation.

p21 (ANT0044R) Rabbit mAb

Formulation: Each vial contains 1mg/ml Magnetic Bead in PBS, pH 7.2, 0.05mg ANaN3.

Host Species

- Rabbit
- Mouse,Rat,
- WB,IHC,IF,IP,ELISA

Reactivity

Applications

MW

- 18kD (Calculated)
- 18kD (Observed)
- IgG,Kappa

Isotype

Recommended Dilution Ratios

IP

Basic Information

Clonality Monoclonal

Clone Number ANT0044R

Immunogen Information

Specificity Endogenous

Target Information

Gene name CDKN1A CAP20 CDKN1 CIP1 MDA6 PIC1 SDI1 WAF1

Protein Name p21

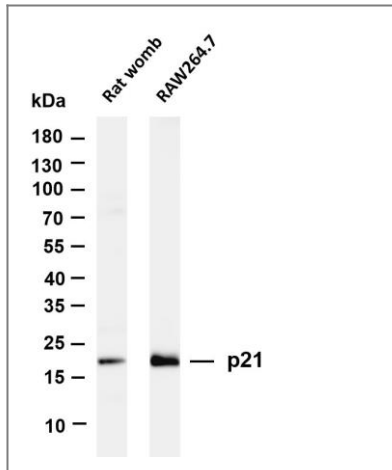
Organism	Gene ID	UniProt ID
Human	1026 ;	P38936 ;
Mouse	12575 ;	P39689 ;

Cellular Nucleus
Localization

Tissue specificity Expressed in all adult tissues, with 5-fold lower levels observed in the brain.

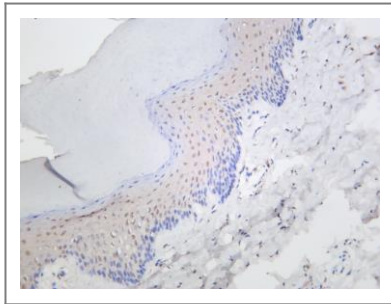
Function Function:May be the important intermediate by which p53 mediates its role as an inhibitor of cellular proliferation in response to DNA damage. Binds to and inhibits cyclin-dependent kinase activity, preventing phosphorylation of critical cyclin-dependent kinase substrates and blocking cell cycle progression.,induction:By p53, mezerein (antileukemic compound) and interferon beta.,ANTM:Phosphorylation of Thr-145 by Akt or of Ser-146 by PKC impairs binding to PCNA.,similarity:Belongs to the CDI family.,tissue specificity:Expressed in all adult human tissues, with 5-fold lower levels observed in the brain.,

Validation Data



Various whole cell lysates were separated by 4-20% SDS-PAGE, and the membrane was blotted with anti-p21 (ANT0044R) antibody. The HRPconjugated Goat anti-Rabbit IgG(H + L) antibody was used to detect the antibody. Lane 1: Rat womb Lane 2: RAW264.7
Predicted band size: 18kDa
Observed band size: 18kDa

Rat skin was stained with anti-p21 (ANT0044R) rabbit antibody



For Research use only, not for diagnostics and clinical use
Contact Antagene Inc Tel 1-866-964-2589 Email: info@antageneinc.com