



## Mouse Monoclonal Antibody **CD43** conjugated to Sepharose Beads

CatalogNo: **ANT8361-S**

Size 200ul

Storage Store at 4 °C for frequent use

### Description

This Antagene antibody is immobilized via covalent binding of primary amino groups to N-hydroxysuccinimide (NHS)-activated sepharose beads. It is useful for immunoprecipitation assays.

### **CD43 (ANT0040R) Rabbit mAb**

Formulation: 50% slurry in PBS pH 7.2 with 0.01mg NaN<sub>3</sub> preservative.

#### Host Species

- Rabbit
- Human,
- WB,IHC,IF,IP,ELISA

#### Reactivity

#### Applications

#### MW

- 40kD (Calculated)
- IgG,Kappa
- 130kD (Observed)

#### Isotype

## **Recommended Dilution Ratios**

### **IP**

### **Basic Information**

**Clonality** Monoclonal

**Clone Number** ANT0040R

# Immunogen Information

Specificity Endogenous

Gene name SPN CD43

Protein Name Leukosialin (GPL115) (Galactoglycoprotein) (GALGP) (Leukocyte sialoglycoprotein) (Sialophorin) (CD antigen CD43) [Cleaved into: CD43 cytoplasmic tail (CD43-ct) (CD43ct)]

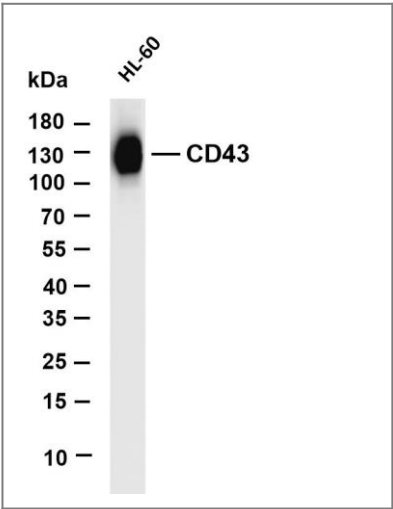
Organism	Gene ID	UniProt ID
Human	<a href="#">6693;</a>	<a href="#">P16150;</a>
Mouse	<a href="#">20737;</a>	<a href="#">P15702;</a>
Rat		<a href="#">P13838;</a>

Cellular Localization Membrane

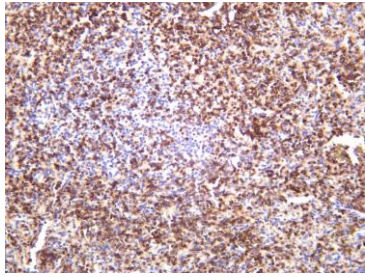
Tissue specificity Cell surface of thymocytes, T-lymphocytes, neutrophils, plasma cells and myelomas.

Function Disease:CD43 expression is defective on the T-cells of males with the immunodeficiency Wiskott-Aldrich syndrome. Affected males are susceptible to opportunistic infections and do not respond to polysaccharide antigens, reflecting defects in cytotoxic and helper T-cell functions.,Function:One of the major glycoproteins of thymocytes and T lymphocytes. Plays a role in the physicochemical properties of the T-cell surface and in lectin binding. Presents carbohydrate ligands to selectins. Has an extended rodlike structure that could protrude above the glycocalyx of the cell and allow multiple glycan chains to be accessible for binding. Is a counter receptor for SN/Siglec-1 (By similarity). During T-cell activation is actively removed from the T-cell-APC (antigen-presenting cell) contact site thus suggesting a negative regulatory role in adaptive immune response.,ANTM:Glycosylated; has a high content of sialic acid and O-linked carbohydrate structures.,subunit:Interacts with HIPK2 via the cytoplasmic domain.,tissue specificity:Cell surface of thymocytes, T-lymphocytes, neutrophils, plasma cells and myelomas.,

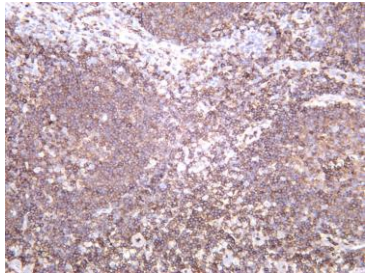
# Validation Data



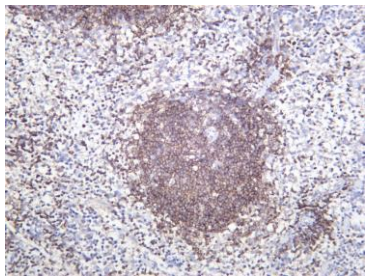
Various whole cell lysates were separated by 4-20% SDS-PAGE, and the membrane was blotted with anti-CD43 (ANT0040R) antibody. The HRPconjugated Goat anti-Rabbit IgG(H + L) antibody was used to detect the antibody. Lane 1: HL-60 Predicted band size: 40kDa Observed band size: 130kDa



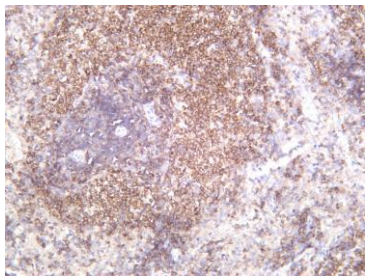
Human spleen was stained with anti-CD43 (ANT0040R) rabbit antibody



Human tonsil was stained with anti-CD43 (ANT0040R) rabbit antibody



Mouse spleen was stained with anti-CD43 (ANT0040R) rabbit antibody



Rat spleen was stained with anti-CD43 (ANT0040R) rabbit antibody

For Research use only, not for diagnostics and clinical use  
Contact Antagene Inc Tel 1-866-964-2589 Email: [info@antageneinc.com](mailto:info@antageneinc.com)