



## MMP7 (ANT0038R) Rabbit mAb

CatalogNo: ANT8359 **Recombinant** 

Formulation: PBS,50%glycerol,0.05%Proclin 300,0.05%BSA  
Quantity : 100 ug/vial

### Host Species

- Rabbit
- Human,
- WB,IHC,IF,IP,ELISA

### Reactivity

### Applications

### MW

- 30kD (Calculated)
  - IgG,Kappa
- 30kD (Observed)

### Isotype

## Recommended Dilution Ratios

IHC 1:200-1:1000

WB 1:2000-1:10000

IF 1:200-1:1000

ELISA 1:5000-1:20000

IP 1:50-1:200

## Storage

**Storage\*** -15°C to -25°C/1 year(Do not lower than -25°C)

## Basic Information

**Clonality** Monoclonal

**Clone Number** ANT0038R

## Target Information

Endogenous

Gene name MMP7  
Protein Name Matrilysin

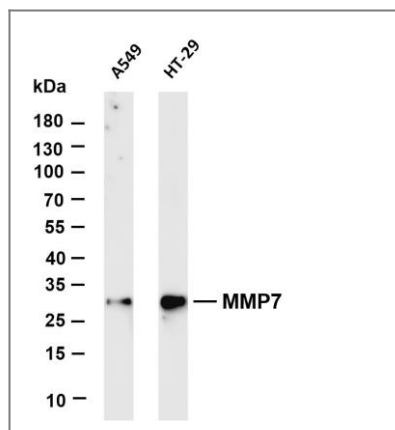
Organism	Gene ID	UniProt ID
Human	<a href="#">4316;</a>	<a href="#">P09237;</a>
Mouse		<a href="#">Q10738;</a>
Rat	<a href="#">25335;</a>	<a href="#">P50280;</a>

Cellular Secreted  
Localization

Tissue specificity Colon,Human small intestine,Kidney,Placenta,

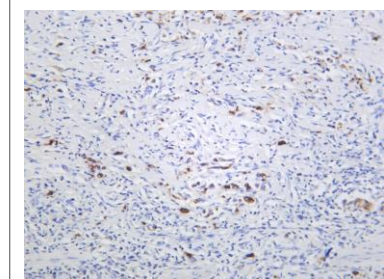
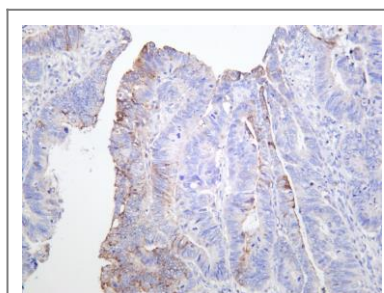
Function Catalytic activity:Cleavage of 14-Ala-|-Leu-15 and 16-Tyr-|-Leu-17 in B chain of insulin. No action on collagen types I, II, IV, V. Cleaves gelatin chain alpha-2(I) > alpha-1(I).,cofactor:Binds 2 calcium ions per subunit.,cofactor:Binds 2 zinc ions per subunit.,Domain:The conserved cysteine present in the cysteine-switch motif binds the catalytic zinc ion, thus inhibiting the enzyme. The dissociation of the cysteine from the zinc ion upon the activation-peptide release activates the enzyme.,Function:Degrades casein, gelatins of types I, III, IV, and V, and fibronectin. Activates procollagenase.,similarity:Belongs to the peptidase M10A family.,

## Validation Data



Various whole cell lysates were separated by 4-20% SDS-PAGE, and the membrane was blotted with anti-MMP7 (ANT0038R) antibody. The HRPconjugated Goat anti-Rabbit IgG(H + L) antibody was used to detect the antibody. Lane 1: A549 Lane 2: HT-29  
Predicted band size: 30kDa Observed band size: 30kDa

Human colon carcinoma was stained with anti-MMP7 (ANT0038R) rabbit antibody



Human stomach carcinoma was stained with anti-MMP7 (PT0538R) rabbit antibody

For Research use only, not for diagnostics and clinical use  
Contact Antagene Inc Tel 1-866-964-2589 Email: [info@antageneinc.com](mailto:info@antageneinc.com)