



## Mouse Monoclonal Antibody **MMP7** conjugated to Sepharose Beads

CatalogNo: **ANT8359-S**

Size 200ul

Storage Store at 4 °C for frequent use

### Description

This Antagene antibody is immobilized via covalent binding of primary amino groups to N-hydroxysuccinimide (NHS)-activated sepharose beads. It is useful for immunoprecipitation assays.

### **MMP7 (ANT0038R) Rabbit mAb**

Formulation: 50% slurry in PBS pH 7.2 with 0.01mg NaN<sub>3</sub> preservative.

#### Host Species

- Rabbit
- Human,
- WB,IHC,IF,IP,ELISA

#### Reactivity

#### Applications

#### MW

- 30kD (Calculated)
- IgG,Kappa
- 30kD (Observed)

#### Isotype

## **Recommended Dilution Ratios**

### **IP**

## **Basic Information**

#### Clonality

Monoclonal

Clone Number      ANT0038R

Immunogen Information

Specificity      Endogenous

Gene name      MMP7

Protein Name      Matrilysin

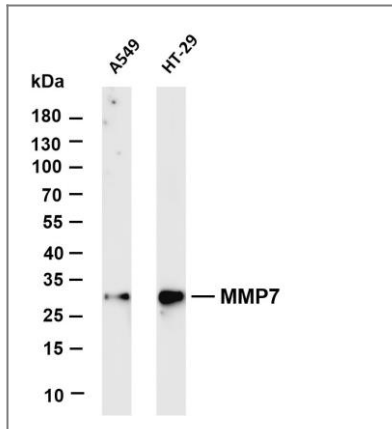
Organism	Gene ID	UniProt ID
Human	<a href="#">4316;</a>	<a href="#">P09237;</a>
Mouse		<a href="#">Q10738;</a>
Rat	<a href="#">25335;</a>	<a href="#">P50280;</a>

Cellular Localization      Secreted

Tissue specificity Colon,Human small intestine,Kidney,Placenta,

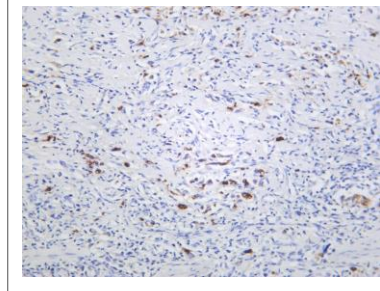
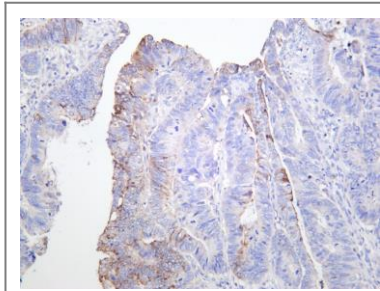
Function      Catalytic activity: Cleavage of 14-Ala-|-Leu-15 and 16-Tyr-|-Leu-17 in B chain of insulin. No action on collagen types I, II, IV, V. Cleaves gelatin chain alpha-2(I) > alpha-1(I)., cofactor: Binds 2 calcium ions per subunit., cofactor: Binds 2 zinc ions per subunit., Domain: The conserved cysteine present in the cysteine-switch motif binds the catalytic zinc ion, thus inhibiting the enzyme. The dissociation of the cysteine from the zinc ion upon the activation-peptide release activates the enzyme., Function: Degrades casein, gelatins of types I, III, IV, and V, and fibronectin. Activates procollagenase., similarity: Belongs to the peptidase M10A family.,

## Validation Data



Various whole cell lysates were separated by 4-20% SDS-PAGE, and the membrane was blotted with anti-MMP7 (ANT0038R) antibody. The HRPconjugated Goat anti-Rabbit IgG(H + L) antibody was used to detect the antibody. Lane 1: A549 Lane 2: HT-29  
Predicted band size: 30kDa Observed band size: 30kDa

Human colon carcinoma was stained with anti-MMP7 (ANT0038R) rabbit antibody



Human stomach carcinoma was stained with anti-MMP7 (PT0538R) rabbit antibody

For Research use only, not for diagnostics and clinical use  
Contact Antagene Inc Tel 1-866-964-2589 Email: [info@antageneinc.com](mailto:info@antageneinc.com)