



Mouse Monoclonal Antibody **MMP7** conjugated to Sepharose Beads

CatalogNo: **ANT8359-M**

Size 200ul

Storage Store at 4 °C for frequent use

Description

This Antagene antibody is immobilized by the covalent reaction of hydrazinonicotinamide-modified antibody with formylbenzamide-modified beads. It is useful for immunoprecipitation.

MMP7 (ANT0038R) Rabbit mAb

Formulation: Each vial contains 1mg/ml Magnetic Bead in PBS, pH 7.2, 0.05mg ANaN3.

Host Species

- Rabbit
- Human,
- WB,IHC,IF,IP,ELISA

Reactivity

Applications

MW

- 30kD (Calculated)
- IgG,Kappa
- 30kD (Observed)

Isotype

Recommended Dilution Ratios

IP

Basic Information

Clonality

Monoclonal

Clone Number ANT0038R

Immunogen Information

Specificity Endogenous

Gene name MMP7

Protein Name Matrilysin

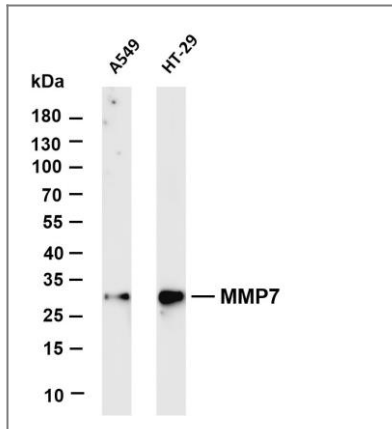
Organism	Gene ID	UniProt ID
Human	4316;	P09237;
Mouse		Q10738;
Rat	25335;	P50280;

Cellular Localization Secreted

Tissue specificity Colon,Human small intestine,Kidney,Placenta,

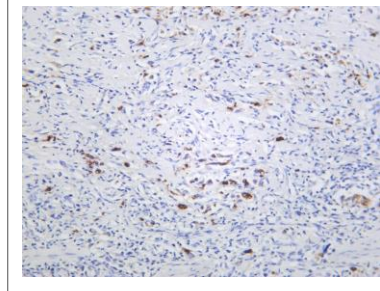
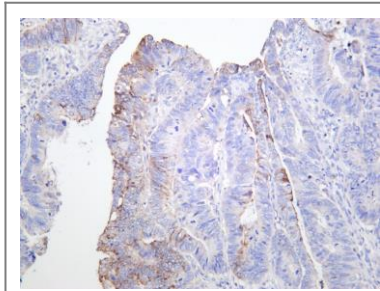
Function Catalytic activity: Cleavage of 14-Ala-|-Leu-15 and 16-Tyr-|-Leu-17 in B chain of insulin. No action on collagen types I, II, IV, V. Cleaves gelatin chain alpha-2(I) > alpha-1(I)., cofactor: Binds 2 calcium ions per subunit., cofactor: Binds 2 zinc ions per subunit., Domain: The conserved cysteine present in the cysteine-switch motif binds the catalytic zinc ion, thus inhibiting the enzyme. The dissociation of the cysteine from the zinc ion upon the activation-peptide release activates the enzyme., Function: Degrades casein, gelatins of types I, III, IV, and V, and fibronectin. Activates procollagenase., similarity: Belongs to the peptidase M10A family.,

Validation Data



Various whole cell lysates were separated by 4-20% SDS-PAGE, and the membrane was blotted with anti-MMP7 (ANT0038R) antibody. The HRPconjugated Goat anti-Rabbit IgG(H + L) antibody was used to detect the antibody. Lane 1: A549 Lane 2: HT-29
Predicted band size: 30kDa Observed band size: 30kDa

Human colon carcinoma was stained with anti-MMP7 (ANT0038R) rabbit antibody



Human stomach carcinoma was stained with anti-MMP7 (PT0538R) rabbit antibody

For Research use only, not for diagnostics and clinical use
Contact Antagene Inc Tel 1-866-964-2589 Email: info@antageneinc.com