



## CD10 (ANT0037R) Rabbit mAb

CatalogNo: ANT8358 **Recombinant R**

Formulation: PBS,50%glycerol,0.05%Proclin 300,0.05%BSA  
Quantity : 100 ug/vial

### Host Species

- Rabbit
- Human,Mouse,Rat,

### Reactivity

- WB,IHC,IF,IP,ELISA

### Applications

### MW

- 86kD (Calculated)
- 100kD (Observed)

### Isotype

- IgG,Kappa

## Recommended Dilution Ratios

IHC 1:1000-1:4000

WB 1:2000-1:10000

IF 1:200-1:1000

ELISA 1:5000-1:20000

IP 1:50-1:200

## Storage

**Storage\*** -15°C to -25°C/1 year(Do not lower than -25°C)

## Basic Information

**Clonality** Monoclonal

**Clone Number** ANT0037R

## Target Information

Endogenous

Gene name MME  
Protein Name Neprilysin

Organism	Gene ID	UniProt ID
Human	<a href="#">4311</a> ;	<a href="#">P08473</a> ;
Mouse	<a href="#">17380</a> ;	<a href="#">Q61391</a> ;
Rat	<a href="#">24590</a> ;	<a href="#">P07861</a> ;

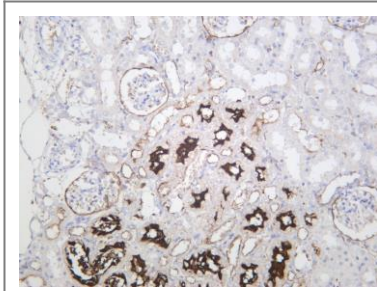
Cellular Localization Membrane

Tissue specificity Adrenal cortex,Brain,Kidney,Placenta,

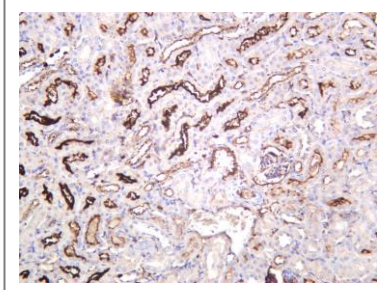
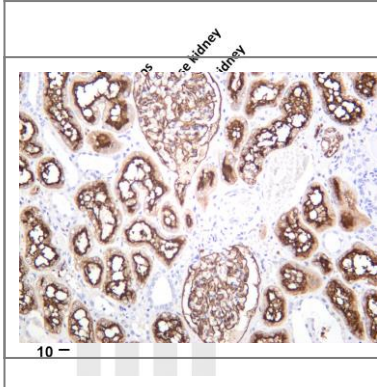
Function Catalytic activity:Preferential cleavage of polypeptides between hydrophobic residues, particularly with Phe or Tyr at P1'.cofactor:Binds 1 zinc ion per subunit.,Disease:Important cell surface marker in the diagnostic of human acute lymphocytic leukemia.,enzyme regulation:Inhibited in a dose dependent manner by opiorphin.,Function:Thermolysin-like specificity, but is almost confined on acting on polypeptides of up to 30 amino acids. Biologically important in the destruction of opioid peptides such as Met- and Leuenkephalins by cleavage of a Gly-Phe bond. Involved in the degradation of atrial natriuretic factor (ANF).,similarity:Belongs to the peptidase M13 family.,

## Validation Data

Rat kidney was stained with anti-CD10 (ANT0037R) rabbit antibody



Various whole cell lysates were separated by 4-20% SDS-PAGE, and the membrane was blotted with anti-CD10 (ANT0037R) antibody. The HRPconjugated Goat anti-Rabbit IgG(H + L) antibody was used to detect the antibody. Lane 1: A172 Lane 2: Romes Lane 3: Mouse kidney Lane 4: Rat kidney Predicted band size: 86kDa Observed band size: 100kDa Human kidney was stained with anti-CD10 (ANT0037R) rabbit antibody



Mouse kidney was stained with anti-CD10 (ANT0037R) rabbit antibody

For Research use only, not for diagnostics and clinical use  
Contact Antagene Inc Tel 1-866-964-2589 Email: [info@antageneinc.com](mailto:info@antageneinc.com)