



Mouse Monoclonal Antibody **CD10** conjugated to Sepharose Beads

CatalogNo: **ANT8358-M**

Size 200ul

Storage Store at 4 °C for frequent use

Description

This Antagene antibody is immobilized by the covalent reaction of hydrazinonicotinamide-modified antibody with formylbenzamide-modified beads. It is useful for immunoprecipitation.

CD10 (ANT0037R) Rabbit mAb

Formulation: Each vial contains 1mg/ml Magnetic Bead in PBS, pH 7.2, 0.05mg ANaN3.

Host Species

- Rabbit
- Human, Mouse, Rat,

Reactivity

- WB, IHC, IF, IP, ELISA

Applications

MW

- 86kD (Calculated)
- 100kD (Observed)
- IgG, Kappa

Isotype

Recommended Dilution Ratios

IP

Basic Information

Clonality

Monoclonal

Clone Number ANT0037R

Immunogen Information

Specificity Endogenous

Gene name MME

Protein Name Neprilysin

Organism	Gene ID	UniProt ID
Human	4311 ;	P08473 ;
Mouse	17380 ;	Q61391 ;
Rat	24590 ;	P07861 ;

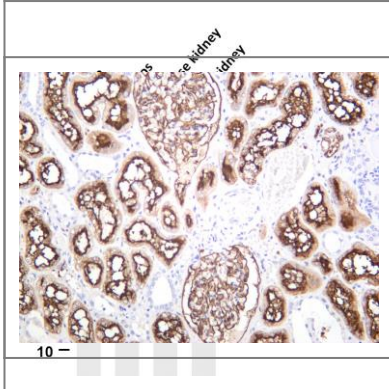
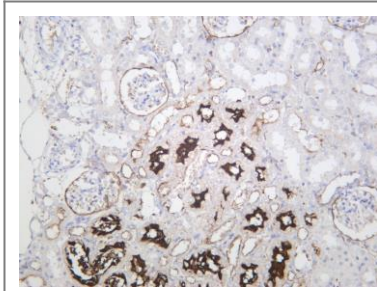
**Cellular
Localization** Membrane

Tissue specificity Adrenal cortex,Brain,Kidney,Placenta,

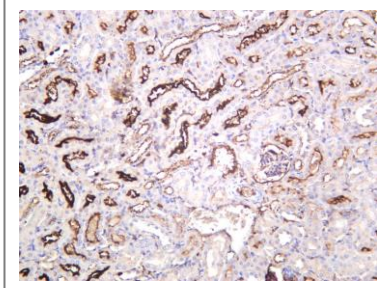
Function Catalytic activity:Preferential cleavage of polypeptides between hydrophobic residues, particularly with Phe or Tyr at P1'.cofactor:Binds 1 zinc ion per subunit.,Disease:Important cell surface marker in the diagnostic of human acute lymphocytic leukemia.,enzyme regulation:Inhibited in a dose dependent manner by opiorphin.,Function:Thermolysin-like specificity, but is almost confined on acting on polypeptides of up to 30 amino acids. Biologically important in the destruction of opioid peptides such as Met- and Leuenkephalins by cleavage of a Gly-Phe bond. Involved in the degradation of atrial natriuretic factor (ANF).,similarity:Belongs to the peptidase M13 family.,

Validation Data

Rat kidney was stained with anti-CD10 (ANT0037R) rabbit antibody



Various whole cell lysates were separated by 4-20% SDS-PAGE, and the membrane was blotted with anti-CD10 (ANT0037R) antibody. The HRPconjugated Goat anti-Rabbit IgG(H + L) antibody was used to detect the antibody. Lane 1: A172 Lane 2: Romes Lane 3: Mouse kidney Lane 4: Rat kidney Predicted band size: 86kDa Observed band size: 100kDa Human kidney was stained with anti-CD10 (ANT0037R) rabbit antibody



Mouse kidney was stained with anti-CD10 (ANT0037R) rabbit antibody

For Research use only, not for diagnostics and clinical use
Contact Antagene Inc Tel 1-866-964-2589 Email: info@antageneinc.com