



Mouse Monoclonal Antibody **Slug** conjugated to Sepharose Beads

CatalogNo: **ANT8357-S**

Size 200ul

Storage Store at 4 °C for frequent use

Description

This Antagene antibody is immobilized via covalent binding of primary amino groups to N-hydroxysuccinimide (NHS)-activated sepharose beads. It is useful for immunoprecipitation assays.

Slug (ANT0036R) Rabbit mAb

Formulation: 50% slurry in PBS pH 7.2 with 0.01mg NaN3a3 preservative.

Host Species

- Rabbit
- Human, Mouse
- WB, IF, IP, ELISA

Reactivity

Applications

MW

- 30kD (Calculated)
- IgG, Kappa
- 36kD (Observed)

Isotype

Recommended Dilution Ratios

IP

Basic Information

Clonality Monoclonal

Clone Number ANT0036R

Immunogen Information

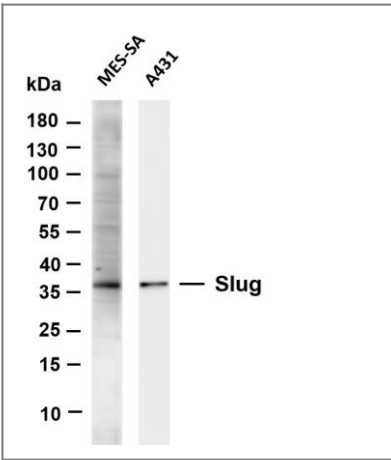
Specificity Endogenous

Target Information

Gene name SNAI2 SLUG SLUGH
Protein Name SLUG

	Organism	Gene ID	UniProt ID
	Human	6591 ;	O43623 ;
	Mouse	20583 ;	P97469 ;
	Rat	25554 ;	O08954 ;
Cellular Localization	Cytoplasm, Nucleus		
Tissue specificity	Expressed in most adult human tissues, including spleen, thymus, prostate, testis, ovary, small intestine, colon, heart, brain, placenta, lung, liver, skeletal muscle, kidney and pancreas. Not detected in peripheral blood leukocyte. Expressed in the dermis and in all layers of the epidermis, with high levels of expression in the basal layers (at protein level). Expressed in osteoblasts (at protein level). Expressed in mesenchymal stem cells (at protein level). Expressed in breast tumor cells (at protein level).		
Function	Disease:Defects in SNAI2 are a cause of neural tube defects (NTD).,disease:Defects in SNAI2 are the cause of Waardenburg syndrome type 2D (WS2D) [MIM:608890]. WS2 is a genetically heterogeneous, autosomal dominant disorder characterized by sensorineural deafness, pigmentary disturbances, and absence of dystopia canthorum. The frequency of deafness is higher in WS2 than in WS1.,Function:Transcriptional repressor. Involved in the generation and migration of neural crest cells.,similarity:Belongs to the snail C2H2-type zinc-finger protein family.,similarity:Contains 5 C2H2-type zinc fingers.,tissue specificity:Expressed in placenta and adult heart, pancreas, liver, kidney and skeletal muscle.,		

Validation Data



Various whole cell lysates were separated by 4-20% SDS-PAGE, and the membrane was blotted with anti-Slug (ANT0036R) antibody. The HRPconjugated Goat anti-Rabbit IgG(H + L) antibody was used to detect the antibody. Lane 1: MES-SA Lane 2: A431 Predicted band size: 30kDa Observed band size: 36kDa

For Research use only, not for diagnostics and clinical use
Contact Antagene Inc Tel 1-866-964-2589 Email: info@antageneinc.com