



Mouse Monoclonal Antibody **RIP3** conjugated to Sepharose Beads

CatalogNo: **ANT8350-S**

Size 200ul

Storage Store at 4 °C for frequent use

Description

This Antagene antibody is immobilized via covalent binding of primary amino groups to N-hydroxysuccinimide (NHS)-activated sepharose beads. It is useful for immunoprecipitation assays.

RIP3 (ANT0028R) Rabbit mAb

Formulation: 50% slurry in PBS pH 7.2 with 0.01mg NaN₃ preservative.

Host Species

- Rabbit
- Mouse

Reactivity

- WB,IF,IP,ELISA

Applications

MW

- 50kD (Calculated)
- 50kD (Observed)

Isotype

- IgG,Kappa

Recommended Dilution Ratios

IP

Basic Information

Clonality	Monoclonal
Clone Number	ANT0028R

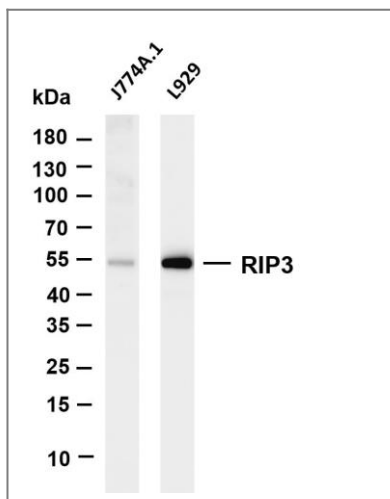
Immunogen Information

Specificity	Endogenous
-------------	------------

Target Information

Gene name	RIPK3 RIP3		
Protein Name	Receptor-interacting serine/threonine-protein kinase 3 (EC 2.7.11.1) (RIP-like protein kinase 3) (Receptor-interacting protein 3) (RIP-3)		
	Organism	Gene ID	UniProt ID
	Human	11035;	Q9Y572;
	Mouse		Q9QZL0;
	Rat		Q9Z2P5;
Cellular Localization	Cytoplasm, Nucleus		
Tissue specificity	Highly expressed in the pancreas. Detected at lower levels in heart, placenta, lung and kidney. ; [Isoform 3]: Expression is significantly increased in colon and lung cancers.		
Function	Catalytic activity:ATP + a protein = ADP + a phosphoprotein.,Function:Promotes apoptosis.,ANTM:Autophosphorylated.,similarity:Belongs to the protein kinase superfamily. TKL Ser/Thr protein kinase family.,similarity:Contains 1 protein kinase domain.,subunit:Binds TRAF2 and RIPK1 and is recruited to the TNFR-1 signaling complex.,tissue specificity:Highly expressed in the pancreas. Detected at lower levels in heart, placenta, lung and kidney. Isoform 3 is significantly increased in colon and lung cancers.,		

Validation Data



Various whole cell lysates were separated by 4-20% SDS-PAGE, and the membrane was blotted with anti-RIP3 (ANT0028R) antibody. The HRPconjugated Goat anti-Rabbit IgG(H + L) antibody was used to detect the antibody. Lane 1: J774A.1 Lane 2: L929 Predicted band size: 50kDa Observed band size: 50kDa