



CD206/MRC1 (ANT0027R) Rabbit mAb

CatalogNo: ANT8349 **Recombinant** 

Formulation: PBS,50%glycerol,0.05%Proclin 300,0.05%BSA
Quantity : 100 ug/vial

Host Species

- Rabbit

MW

- 190kD (Calculated)
- 190kD (Observed)

Reactivity

- Human,Mouse,Rat,

Isotype

- IgG,Kappa

Applications

- WB,IHC,IF,IP,ELISA

Recommended Dilution Ratios

IHC 1:200-1:1000

WB 1:5000-1:20000

IF 1:200-1:1000

ELISA 1:5000-1:20000

IP 1:50-1:200

Storage

Storage* -15°C to -25°C/1 year(Do not lower than -25°C)

Basic Information

Clonality Monoclonal

Clone Number ANT0027R

Target Information

Endogenous

Gene name MRC1
Protein Name Macrophage mannose receptor 1

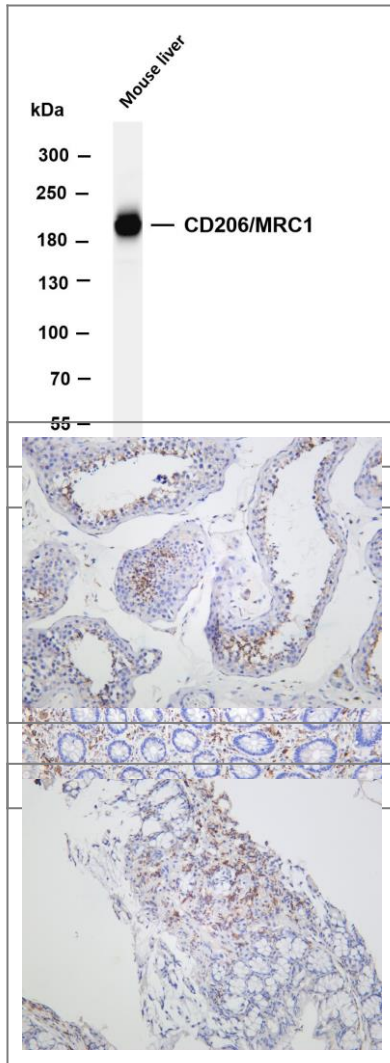
Organism	Gene ID	UniProt ID
Human	4360 ;	P22897 ;
Mouse	17533 ;	Q61830 ;

Cellular Localization Membrane

Tissue specificity Milk,Placenta,Testis,

Function: Mediates the endocytosis of glycoproteins by macrophages. Binds both sulfated and non-sulfated polysaccharide chains. Acts as phagocytic receptor for bacteria, fungi and other pathogens.,miscellaneous:CRDs 1-3 have at most very weak affinity for carbohydrate. CRD 4 shows the highest affinity binding and has multispecificity for a variety of monosaccharides. At least 3 CRDs (4, 5, and 7) are required for high affinity binding and endocytosis of multivalent glycoconjugates.,online information:Macrophage mannose receptor,similarity:Contains 1 fibronectin type-II domain.,similarity:Contains 1 ricin B-type lectin domain.,similarity:Contains 8 C-type lectin domains.,

Validation Data



Various whole cell lysates were separated by 4-8% SDS-PAGE, and the membrane was blotted with anti-CD206/MRC1 (ANT0027R) antibody. The HRPconjugated Goat anti-Rabbit IgG(H + L) antibody was used to detect the antibody. Lane 1: Mouse liver
Predicted band size: 190kDa Observed band size: 190kDa

Human colon was stained with anti-CD206/MRC1 (ANT0027R) rabbit antibody
Human testis was stained with anti-CD206/MRC1 (ANT0027R) rabbit antibody

Mouse colon was stained with anti-CD206/MRC1 (ANT0027R) rabbit antibody

For Research use only, not for diagnostics and clinical use
Contact Antagene Inc Tel 1-866-964-2589 Email: info@antageneinc.com