



Mouse Monoclonal Antibody **CD206/MRC1** conjugated to Sepharose Beads

CatalogNo: **ANT8349-S**

Size 200ul

Storage Store at 4 °C for frequent use

Description

This Antagene antibody is immobilized via covalent binding of primary amino groups to N-hydroxysuccinimide (NHS)-activated sepharose beads. It is useful for immunoprecipitation assays.

CD206/MRC1 (ANT0027R) Rabbit mAb

Formulation: 50% slurry in PBS pH 7.2 with 0.01mg NaN₃ preservative.

Host Species

- Rabbit

MW

- 190kD (Calculated)
- 190kD (Observed)

Reactivity

- Human, Mouse, Rat,

Isotype

- IgG, Kappa

Applications

- WB, IHC, IF, IP, ELISA

Recommended Dilution Ratios

IP

Basic Information

Clonality

Monoclonal

Clone Number ANT0027R

Immunogen Information

Specificity Endogenous

Gene name MRC1

Protein Name Macrophage mannose receptor 1

Organism	Gene ID	UniProt ID
Human	4360 ;	P22897 ;
Mouse	17533 ;	Q61830 ;

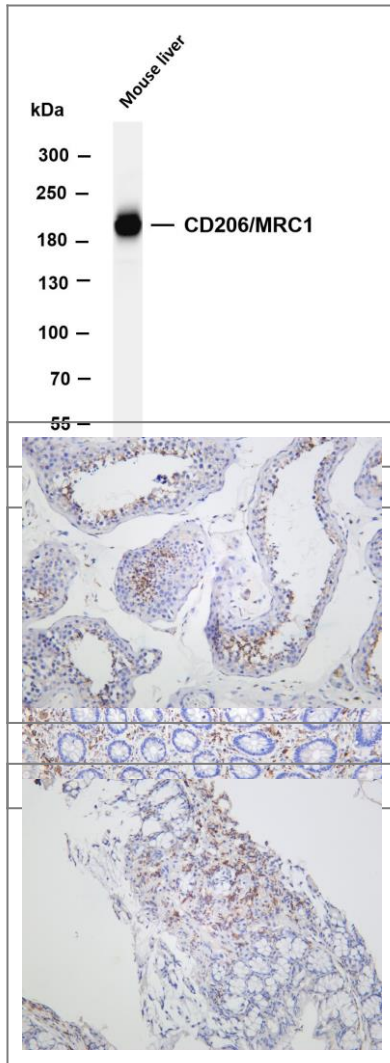
Cellular Localization Membrane

Tissue specificity Milk,Placenta,Testis,

Function Function:Mediates the endocytosis of glycoproteins by macrophages. Binds both sulfated and non-sulfated polysaccharide chains. Acts as phagocytic receptor for bacteria, fungi and other pathogens.,miscellaneous:CRDs 1-3 have at most very weak affinity for carbohydrate. CRD 4 shows the highest affinity binding and has multispecificity for a variety of monosaccharides. At least 3 CRDs (4, 5, and 7) are required for high affinity binding and endocytosis of multivalent glycoconjugates.,online information:Macrophage mannose receptor,similarity:Contains 1 fibronectin type-II domain.,similarity:Contains 1 ricin B-type lectin domain.,similarity:Contains 8 C-type lectin domains.,



Validation Data



Various whole cell lysates were separated by 4-8% SDS-PAGE, and the membrane was blotted with anti-CD206/MRC1 (ANT0027R) antibody. The HRPconjugated Goat anti-Rabbit IgG(H + L) antibody was used to detect the antibody. Lane 1: Mouse liver
Predicted band size: 190kDa Observed band size: 190kDa

Human colon was stained with anti-CD206/MRC1 (ANT0027R) rabbit antibody
Human testis was stained with anti-CD206/MRC1 (ANT0027R) rabbit antibody

Mouse colon was stained with anti-CD206/MRC1 (ANT0027R) rabbit antibody

For Research use only, not for diagnostics and clinical use
Contact Antagene Inc Tel 1-866-964-2589 Email: info@antageneinc.com