



## Mouse Monoclonal Antibody **CD206/MRC1** conjugated to Sepharose Beads

CatalogNo: **ANT8349-M**

Size 200ul

Storage Store at 4 °C for frequent use

### Description

This Antagene antibody is immobilized by the covalent reaction of hydrazinonicotinamide-modified antibody with formylbenzamide-modified beads. It is useful for immunoprecipitation.

### **CD206/MRC1 (ANT0027R) Rabbit mAb**

Formulation: Each vial contains 1mg/ml Magnetic Bead in PBS, pH 7.2, 0.05mg ANaN3.

#### Host Species

- Rabbit

#### MW

- 190kD (Calculated)
- 190kD (Observed)

#### Reactivity

- Human,Mouse,Rat,

#### Isotype

- IgG,Kappa

#### Applications

- WB,IHC,IF,IP,ELISA

## **Recommended Dilution Ratios**

### **IP**

## **Basic Information**

#### Clonality

Monoclonal

Clone Number      ANT0027R

**Immunogen Information**

**Specificity**      Endogenous

**Gene name**      MRC1

**Protein Name**      Macrophage mannose receptor 1

Organism	Gene ID	UniProt ID
Human	<a href="#">4360</a> ;	<a href="#">P22897</a> ;
Mouse	<a href="#">17533</a> ;	<a href="#">Q61830</a> ;

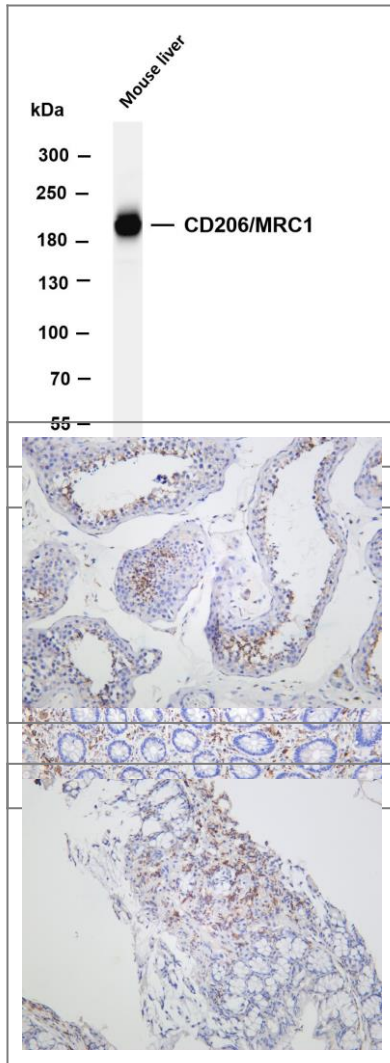
**Cellular Localization**      Membrane

**Tissue specificity** Milk,Placenta,Testis,

**Function**      Function:Mediates the endocytosis of glycoproteins by macrophages. Binds both sulfated and non-sulfated polysaccharide chains. Acts as phagocytic receptor for bacteria, fungi and other pathogens.,miscellaneous:CRDs 1-3 have at most very weak affinity for carbohydrate. CRD 4 shows the highest affinity binding and has multispecificity for a variety of monosaccharides. At least 3 CRDs (4, 5, and 7) are required for high affinity binding and endocytosis of multivalent glycoconjugates.,online information:Macrophage mannose receptor,similarity:Contains 1 fibronectin type-II domain.,similarity:Contains 1 ricin B-type lectin domain.,similarity:Contains 8 C-type lectin domains.,



## Validation Data



Various whole cell lysates were separated by 4-8% SDS-PAGE, and the membrane was blotted with anti-CD206/MRC1 (ANT0027R) antibody. The HRPconjugated Goat anti-Rabbit IgG(H + L) antibody was used to detect the antibody. Lane 1: Mouse liver  
Predicted band size: 190kDa Observed band size: 190kDa

Human colon was stained with anti-CD206/MRC1 (ANT0027R) rabbit antibody  
Human testis was stained with anti-CD206/MRC1 (ANT0027R) rabbit antibody

Mouse colon was stained with anti-CD206/MRC1 (ANT0027R) rabbit antibody

For Research use only, not for diagnostics and clinical use  
Contact Antagene Inc Tel 1-866-964-2589 Email: [info@antageneinc.com](mailto:info@antageneinc.com)