



Mouse Monoclonal Antibody **RUNX2** conjugated to Sepharose Beads

CatalogNo: **ANT8347-M**

Size 200ul

Storage Store at 4 °C for frequent use

### Description

This Antagene antibody is immobilized by the covalent reaction of hydrazinonicotinamide-modified antibody with formylbenzamide-modified beads. It is useful for immunoprecipitation.

**RUNX2 (ANT0024R) Rabbit mAb**

Formulation: Each vial contains 1mg/ml Magnetic Bead in PBS, pH 7.2, 0.05mg ANaN3.

### Host Species

- Rabbit
- Human, Mouse, Rat,

### Reactivity

- WB, IHC, IF, IP, ELISA

### Applications

### MW

- 57kD (Calculated)
  - IgG, Kappa
- 57kD (Observed)

### Isotype

## Recommended Dilution Ratios

### IP

## Basic Information

### Clonality

Monoclonal

Immunogen Information

Specificity

Endogenous

Gene name

RUNX2

Protein Name

Runt-related transcription factor 2

| Organism | Gene ID                 | UniProt ID               |
|----------|-------------------------|--------------------------|
| Human    | <a href="#">860</a> ;   | <a href="#">Q13950</a> ; |
| Mouse    | <a href="#">12393</a> ; | <a href="#">Q08775</a> ; |
| Rat      |                         | <a href="#">Q9Z2J9</a> ; |

Cellular  
Localization

Nucleus

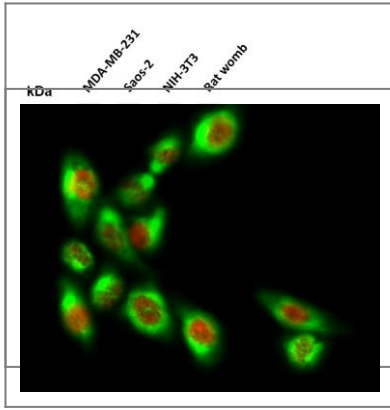
Tissue specificity

Specifically expressed in osteoblasts.

Function

Disease:Defects in RUNX2 are the cause of cleidocranial dysplasia (CCD) [MIM:119600]. CCD is an autosomal dominant skeletal disorder with high penetrance and variable expressivity. It is due to defective endochondral and intramembranous bone formation. Typical features include hypoplasia/aplasia of clavicles, patent fontanelles, wormian bones (additional cranial plates caused by abnormal ossification of the calvaria), supernumerary teeth, short stature, and other skeletal changes. In some cases defects in RUNX2 are exclusively associated with dental anomalies.,Domain:A proline/serine/threonine rich region at the C-terminus is necessary for transcriptional activation of target genes and contains the phosphorylation sites.,Function:Transcription factor involved in osteoblastic differentiation and skeletal morphogenesis. Essential for the maturation of osteoblasts and both intramembranous and endochondral ossification. CBF binds to the core site, 5'PYGPYGGT-3', of a number of enhancers and promoters, including murine leukemia virus, polyomavirus enhancer, T-cell receptor enhancers, osteocalcin, osteopontin, bone sialoprotein, alpha 1(I) collagen, LCK, IL-3 and GM-CSF promoters (By similarity). Inhibits MYST4-dependent transcriptional activation.,ANTM:Phosphorylated; probably by MAP kinases (MAPK) (By similarity). Isoform 3 is phosphorylated on Ser-340.,similarity:Contains 1 Runt domain.,subunit:Heterodimer of an alpha and a beta subunit. Interacts with HIVEP3 (By similarity). The alpha subunit binds DNA as a monomer and through the Runt domain. DNAbinding is increased by heterodimerization. Interacts with G22P1 (Ku70) and XRCC5 (Ku80). Interacts with MYST3 and MYST4.,tissue specificity:Specifically expressed in osteoblasts.,

## Validation Data



Various whole cell lysates were separated by 4-20% SDS-PAGE, and the membrane was blotted with anti-RUNX2 (ANT0024R) antibody. The HRPconjugated Goat anti-Rabbit IgG(H + L) antibody was used to detect the antibody. Lane 1: MDA-MB-231 Lane 2: Saos-2 Lane 3: NIH-3T3 Lane 4: Rat womb Predicted band size: 57kDa Observed band size: 57kDa Immunofluorescence analysis of Hela cell. 1, RUNX2 Antibody(red) was diluted at 1:200(4° overnight). NSE Monoclonal Antibody(13E2)(green) was diluted at 1:200(4° overnight). 2, Goat Anti Rabbit Alexa Fluor 594 Catalog:RS3611 was diluted at 1:1000(room temperature, 50min). Goat Anti Mouse Alexa Fluor 488 Catalog:RS3208 was diluted at 1:1000(room temperature, 50min).

---

For Research use only, not for diagnostics and clinical use  
Contact Antagene Inc Tel 1-866-964-2589 Email: [info@antageneinc.com](mailto:info@antageneinc.com)