



Mouse Monoclonal Antibody **VEGFA** conjugated to Sepharose Beads

CatalogNo: **ANT8345-M**

Size 200ul

Storage Store at 4 °C for frequent use

### Description

This Antagene antibody is immobilized by the covalent reaction of hydrazinonicotinamide-modified antibody with formylbenzamide-modified beads. It is useful for immunoprecipitation.

**VEGFA (ANT0022R) Rabbit mAb**

Formulation: Each vial contains 1mg/ml Magnetic Bead in PBS, pH 7.2, 0.05mg ANaN3.

### Host Species

- Rabbit
- Human, Mouse, Rat,

### Reactivity

- WB, IHC, IF, IP, ELISA

### Applications

### MW

- 27kD (Calculated)
  - IgG, Kappa
- 40kD (Observed)

### Isotype

## Recommended Dilution Ratios

### IP

### Basic Information

**Clonality** Monoclonal

**Clone Number** ANT0022R

# Immunogen Information

Specificity      Endogenous

## Target Information

Gene name      VEGFA

Protein Name      Vascular endothelial growth factor A

Organism	Gene ID	UniProt ID
Human	<a href="#">7422</a> ;	<a href="#">P15692</a> ;
Mouse	<a href="#">22339</a> ;	<a href="#">Q00731</a> ;
Rat	<a href="#">83785</a> ;	<a href="#">P16612</a> ;

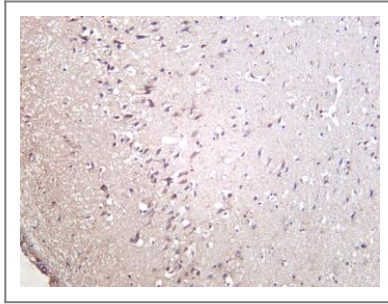
Cellular      Secreted

Localization

Tissue specificity Isoform VEGF189, isoform VEGF165 and isoform VEGF121 are widely expressed. Isoform VEGF206 and isoform VEGF145 are not widely expressed. A higher level expression seen in pituitary tumors as compared to the pituitary gland.

Function Function:Growth factor active in angiogenesis, vasculogenesis and endothelial cell growth. Induces endothelial cell proliferation, promotes cell migration, inhibits apoptosis, and induces permeabilization of blood vessels. Binds to the VEGFR1/Flt-1 and VEGFR2/Kdr receptors, heparan sulfate and heparin. Neuropilin-1 binds isoforms VEGF-165 and VEGF-145. Isoform VEGF165B binds to VEGFR2/Kdr but doesn't activate downstream signaling pathways, doesn't activate angiogenesis and inhibits tumor growth.,induction:Regulated by growth factors, cytokines, gonadotropins, nitric oxide, hypoxia, hypoglycemia and oncogenic mutations.,online information:VEGF entry,similarity:Belongs to the PDGF/VEGF growth factor family.,subcellular location:VEGF121 is acidic and freely secreted. VEGF165 is more basic, has heparin-binding properties and, although a significant proportion remains cell-associated, most is freely secreted. VEGF189 is very basic, it is cell-associated after secretion and is bound avidly by heparin and the extracellular matrix, although it may be released as a soluble form by heparin, heparinase or plasmin.,subunit:Homodimer; disulfide-linked. Also found as heterodimer with PlGF.,tissue specificity:The VEGF189, VEGF-165 and VEGF-121 isoforms are widely expressed, whereas the VEGF206 and VEGF-145 are uncommon.,

## Validation Data

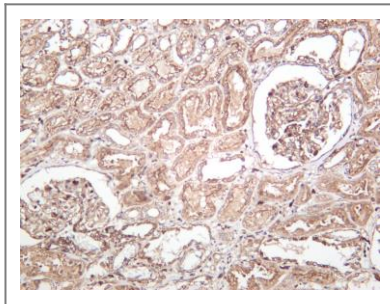
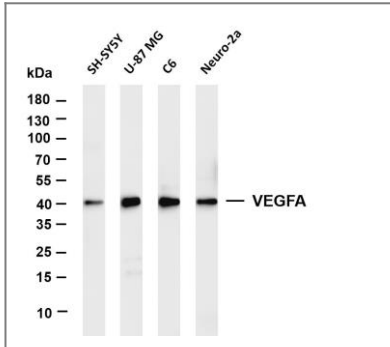


Rat brain was stained with anti-VEGFA (ANT0022R)

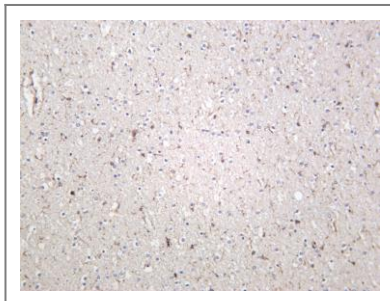
rabbit antibody

Various whole cell lysates were separated by 4-20% SDS-PAGE, and the membrane was blotted with anti-VEGFA (ANT0022R) antibody. The HRPconjugated Goat anti-Rabbit IgG(H + L) antibody was used to detect the antibody. Lane 1: SH-SY5Y Lane 2: U-87 MG Lane 3: C6 Lane 4: Neuro-2a

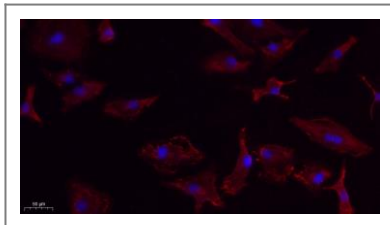
Predicted band size: 27kDa Observed band size: 40kDa



Human kidney was stained with anti-VEGFA (ANT0022R) rabbit antibody



Mouse brain was stained with anti-VEGFA (ANT0022R) rabbit antibody



Immunofluorescence analysis of A549. 1,primary Antibody(red) was diluted at 1:200(4°C overnight). 2, Goat Anti Rabbit IgG (H&L) - Alexa Fluor 594 Secondary antibody was diluted at 1:1000(room temperature, 50min).3, Picture B: DAPI(blue) 10min.