



## Mouse Monoclonal Antibody **CREB-1** conjugated to Sepharose Beads

CatalogNo: **ANT8342-M**

Size 200ul

Storage Store at 4 °C for frequent use

### Description

This Antagene antibody is immobilized by the covalent reaction of hydrazinonicotinamide-modified antibody with formylbenzamide-modified beads. It is useful for immunoprecipitation.

### **CREB-1 (ANT0016R) Rabbit mAb**

Formulation: Each vial contains 1mg/ml Magnetic Bead in PBS, pH 7.2, 0.05mg ANaN3.

#### Host Species

- Rabbit
- Human, Mouse, Rat,

#### Reactivity

- WB, IHC, IF, IP, ELISA

#### Applications

#### MW

- 37kD (Calculated)
- 43kD (Observed)
- IgG, Kappa

#### Isotype

## **Recommended Dilution Ratios**

### **IP**

### **Basic Information**

**Clonality** Monoclonal

**Clone Number** ANT0016R

# Immunogen Information

Specificity	Endogenous
Gene name	CREB1
Protein Name	Cyclic AMP-responsive element-binding protein 1

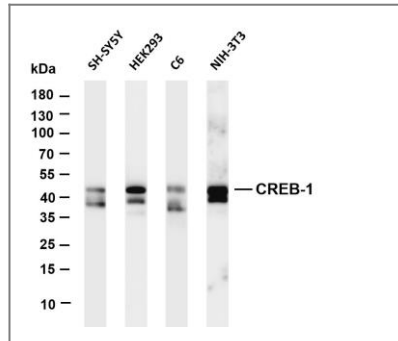
Organism	Gene ID	UniProt ID
Human	<a href="#">1385;</a>	<a href="#">P16220;</a>
Mouse	<a href="#">12912;</a>	<a href="#">Q01147;</a>
Rat	<a href="#">81646;</a>	<a href="#">P15337;</a>

Cellular Localization Nucleus

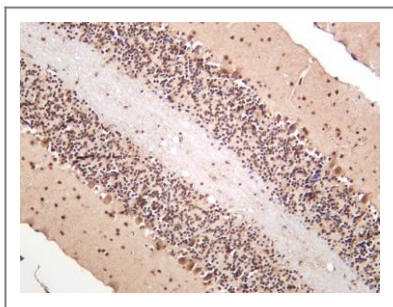
Tissue specificity Eye,Placenta,Spleen,Testis,

**Function** Disease:A chromosomal aberration involving CREB1 is associated with angiomatoid fibrous histiocytoma (AFH) [MIM:612160]. Translocation t(2;22)(q33;q12) with CREB1 generates a EWSR1/CREB1 fusion gene that is most common genetic abnormality in this tumor type.,Function:This protein binds the cAMP response element (CRE), a sequence present in many viral and cellular promoters. CREB stimulates transcription on binding to the CRE. Transcription activation is enhanced by the TORC coactivators which act independently of Ser-133 phosphorylation. Implicated in synchronization of circadian rhythmicity.,ANTM:Stimulated by phosphorylation. Phosphorylation of both Ser-133 and Ser-142 in the SCN regulates the activity of CREB and participates in circadian rhythm generation. Phosphorylation of Ser-133 allows CREBBP binding (By similarity). Phosphorylated upon DNA damage, probably by ATM or ATR.,similarity:Belongs to the bZIP family.,similarity:Contains 1 bZIP domain.,similarity:Contains 1 KID (kinase-inducible) domain.,subunit:Interacts with PPRC1. Binds DNA as a dimer. This dimer is stabilized by magnesium ions. Interacts, through the bZIP domain, with the coactivators TORC1/CRTC1, TORC2/CRTC2 and TORC3/CRTC3. When phosphorylated on Ser-133, binds CREBBP,

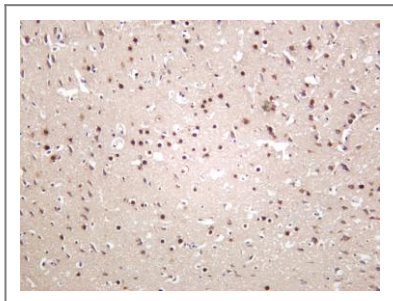
# Validation Data



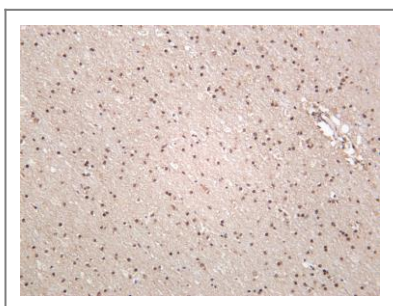
Various whole cell lysates were separated by 4-20% SDS-PAGE, and the membrane was blotted with anti-CREB-1 (ANT0016R) antibody. The HRPconjugated Goat anti-Rabbit IgG(H + L) antibody was used to detect the antibody. Lane 1: SH-SY5Y Lane 2: HEK293 Lane 3: C6 Lane 4: NIH-3T3  
Predicted band size: 37kDa Observed band size: 43kDa



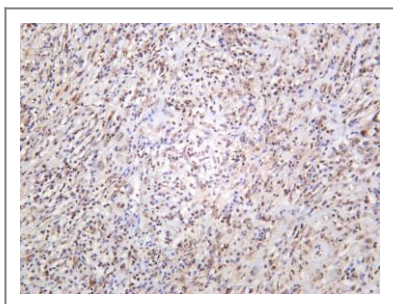
Mouse brain was stained with anti-CREB (ANT0016R) rabbit antibody



Rat brain was stained with anti-CREB (ANT0016R) rabbit antibody



Human brain was stained with anti-CREB (ANT0016R) rabbit antibody



Human thyroid carcinoma was stained with anti-CREB (ANT0016R) rabbit antibody

For Research use only, not for diagnostics and clinical use  
Contact Antagene Inc Tel 1-866-964-2589 Email: [info@antageneinc.com](mailto:info@antageneinc.com)