

GFP/eGFP-Tag (ANT0015R) Rabbit mAb

CatalogNo: ANT8341 **Recombinant** 

Formulation: PBS,50%glycerol,0.05%Proclin 300,0.05%BSA
Quantity : 100 ug/vial

Host Species

- Rabbit

MW

- 27kD (Calculated)
27kD (Observed)

Applications

- WB,IF,IP,ELISA

Isotype

- IgG,Kappa

Recommended Dilution Ratios

WB 1:5000-1:20000

IF 1:200-1:1000

ELISA 1:5000-1:20000

IP 1:50-1:200

Storage

Storage* -15°C to -25°C/1 year(Do not lower than -25°C)

Basic Information

Clonality Monoclonal

Clone Number ANT0015R

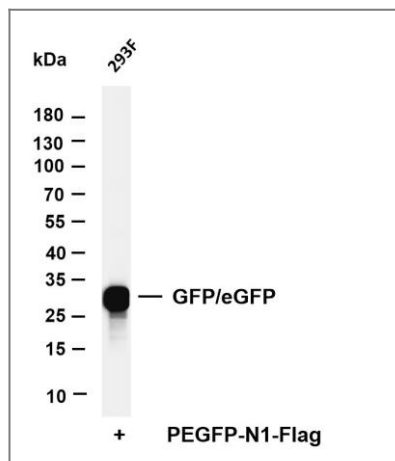
Immunogen Information

Specificity Endogenous

Target Information

Gene name GFP-Tag

Validation Data



Various whole cell lysates were separated by 4-20% SDS-PAGE, and the membrane was blotted with anti-GFP/eGFP (ANT0015R) antibody. The HRPconjugated Goat anti-Rabbit IgG(H + L) antibody was used to detect the antibody. Lane 1: 293F transfection by EGFP
Predicted band size: 27kDa

Observed band size: 27kDa

For Research
use only, not for
diagnostics and
clinical use

Contact
Antagene Inc Tel
1-866-964-2589
Email:
info@antagenei
nc.com