



Mouse Monoclonal Antibody **GFP/eGFP-Tag** conjugated to Sepharose Beads

CatalogNo: **ANT8341-S**

Size 200ul

Storage Store at 4 °C for frequent use

Description

This Antagene antibody is immobilized via covalent binding of primary amino groups to N-hydroxysuccinimide (NHS)-activated sepharose beads. It is useful for immunoprecipitation assays.

GFP/eGFP-Tag (ANT0015R) Rabbit mAb

Formulation: 50% slurry in PBS pH 7.2 with 0.01mg NaN₃ preservative.

Host Species

- Rabbit

MW

- 27kD (Calculated)
- 27kD (Observed)

Applications

- WB,IF,IP,ELISA

Isotype

- IgG,Kappa

Recommended Dilution Ratios

IP

Basic Information

Clonality Monoclonal

Clone Number ANT0015R

Immunogen Information

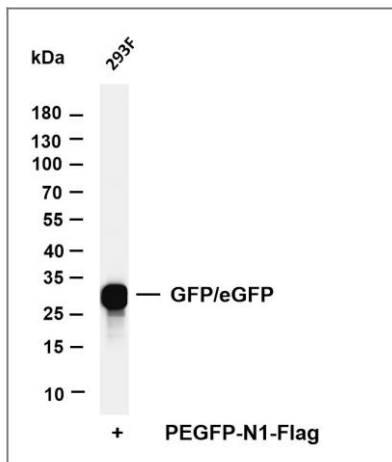
Specificity Endogenous

Target Information

Gene name GFP-Tag

Protein Name GFP Tag

Validation Data



Various whole cell lysates were separated by 4-20% SDS-PAGE, and the membrane was blotted with anti-GFP/eGFP (ANT0015R) antibody. The HRPconjugated Goat anti-Rabbit IgG(H + L) antibody was used to detect the antibody. Lane 1: 293F transfection by EGFP
Predicted band size: 27kDa
Observed band size: 27kDa

For Research
use only, not for
diagnostics and
clinical use

Contact
Antagene Inc Tel
1-866-964-2589
Email:
info@antagenei
nc.com