



Mouse Monoclonal Antibody **ATG5** conjugated to Sepharose Beads

CatalogNo: **ANT8340-S**

Size 200ul

Storage Store at 4 °C for frequent use

Description

This Antagene antibody is immobilized via covalent binding of primary amino groups to N-hydroxysuccinimide (NHS)-activated sepharose beads. It is useful for immunoprecipitation assays.

ATG5 (ANT0014R) Rabbit mAb

Formulation: 50% slurry in PBS pH 7.2 with 0.01mg NaN₃ preservative.

Host Species

- Rabbit
- Human, Mouse, Rat,

Reactivity

- WB, IHC, IF, IP, ELISA

Applications

MW

- 33kD (Calculated)
 - IgG, Kappa
- 55kD (Observed)

Isotype

Recommended Dilution Ratios

IP

Basic Information

Clonality Monoclonal

Clone Number ANT0014R

Immunogen Information

Specificity Endogenous

Gene name ATG5 APG5L ASP

Protein Name ATG5

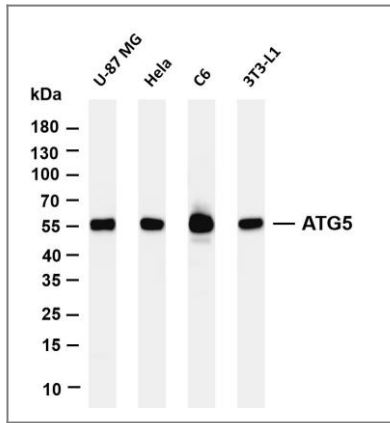
Organism	Gene ID	UniProt ID
Human	9474;	Q9H1Y0;
Mouse	11793;	Q99J83;
Rat		Q3MQ06;

Cellular Localization Cytoplasm

Tissue specificity Ubiquitous. The mRNA is present at similar levels in viable and apoptotic cells, whereas the protein is dramatically highly expressed in apoptotic cells.

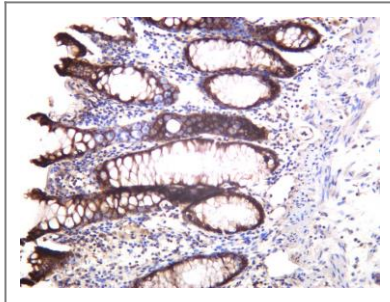
Function Function:May play an important role in the apoptotic process, possibly within the modified cytoskeleton. Its expression is a relatively late event in the apoptotic process, occurring downstream of caspase activity.,Function:Required for autophagy. Conjugates to ATG12 and associates with isolation membrane to form cup-shaped isolation membrane and autophagosome. The conjugate detaches from the membrane immediately before or after autophagosome formation is completed.,induction:By apoptotic stimuli.,ANTM:Conjugated to ATG12; which is essential for autophagy, but is not required for association with isolation membrane.,similarity:Belongs to the ATG5 family.,subcellular location:Colocalizes with nonmuscle actin.,tissue specificity:Ubiquitous. The mRNA is present at similar levels in viable and apoptotic cells, whereas the protein is dramatically highly expressed in apoptotic cells.,

Validation Data



Various whole cell lysates were separated by 4-20% SDS-PAGE, and the membrane was blotted with anti-ATG5 (ANT0014R) antibody. The HRPconjugated Goat anti-Rabbit IgG(H + L) antibody was used to detect the antibody. Lane 1: U-87 MG Lane 2: HeLa Lane 3: C6 Lane 4: 3T3-L1 Predicted band size: 33kDa Observed band size: 55kDa

Human colon was stained with anti-ATG5 (ANT0014R) rabbit antibody



For Research use only, not for diagnostics and clinical use
Contact Antagene Inc Tel 1-866-964-2589 Email: info@antageneinc.com