



## Mouse Monoclonal Antibody **ATG5** conjugated to Sepharose Beads

CatalogNo: **ANT8340-M**

Size 200ul

Storage Store at 4 °C for frequent use

### Description

This Antagene antibody is immobilized by the covalent reaction of hydrazinonicotinamide-modified antibody with formylbenzamide-modified beads. It is useful for immunoprecipitation.

### **ATG5 (ANT0014R) Rabbit mAb**

Formulation: Each vial contains 1mg/ml Magnetic Bead in PBS, pH 7.2, 0.05mg ANaN3.

#### Host Species

- Rabbit
- Human, Mouse, Rat,

#### Reactivity

- WB, IHC, IF, IP, ELISA

#### Applications

#### MW

- 33kD (Calculated)
  - IgG, Kappa
- 55kD (Observed)

#### Isotype

## **Recommended Dilution Ratios**

IP

### **Basic Information**

**Clonality** Monoclonal

**Clone Number** ANT0014R

# Immunogen Information

**Specificity** Endogenous

**Gene name** ATG5 APG5L ASP

**Protein Name** ATG5

Organism	Gene ID	UniProt ID
Human	<a href="#">9474;</a>	<a href="#">Q9H1Y0;</a>
Mouse	<a href="#">11793;</a>	<a href="#">Q99J83;</a>
Rat		<a href="#">Q3MQ06;</a>

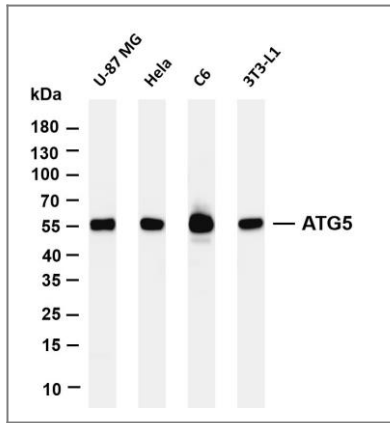
**Cellular Localization** Cytoplasm

**Tissue specificity** Ubiquitous. The mRNA is present at similar levels in viable and apoptotic cells, whereas the protein is dramatically highly expressed in apoptotic cells.

**Function** Function:May play an important role in the apoptotic process, possibly within the modified cytoskeleton. Its expression is a relatively late event in the apoptotic process, occurring downstream of caspase activity.,Function:Required for autophagy. Conjugates to ATG12 and associates with isolation membrane to form cup-shaped isolation membrane and autophagosome. The conjugate detaches from the membrane immediately before or after autophagosome formation is completed.,induction:By apoptotic stimuli.,ANTM:Conjugated to ATG12; which is essential for autophagy, but is not required for association with isolation membrane.,similarity:Belongs to the ATG5 family.,subcellular location:Colocalizes with nonmuscle actin.,tissue specificity:Ubiquitous. The mRNA is present at similar levels in viable and apoptotic cells, whereas the protein is dramatically highly expressed in apoptotic cells.,

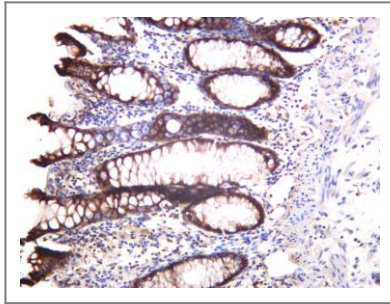
---

## Validation Data



Various whole cell lysates were separated by 4-20% SDS-PAGE, and the membrane was blotted with anti-ATG5 (ANT0014R) antibody. The HRPconjugated Goat anti-Rabbit IgG(H + L) antibody was used to detect the antibody. Lane 1: U-87 MG Lane 2: HeLa Lane 3: C6 Lane 4: 3T3-L1 Predicted band size: 33kDa Observed band size: 55kDa

Human colon was stained with anti-ATG5 (ANT0014R) rabbit antibody



---

For Research use only, not for diagnostics and clinical use  
Contact Antagene Inc Tel 1-866-964-2589 Email: [info@antageneinc.com](mailto:info@antageneinc.com)