

HO-1 (ANT0011R) Rabbit mAb

CatalogNo: ANT8337 **Recombinant** 

Formulation: PBS,50%glycerol,0.05%Proclin 300,0.05%BSA
Quantity : 100 ug/vial

Host Species

- Rabbit
- Human,Mouse,Rat,

Reactivity

- WB,IHC,IF,IP,ELISA

Applications

MW

- 33kD (Calculated)
 - IgG,Kappa
- 33kD (Observed)

Isotype

Recommended Dilution Ratios

IHC 1:2000-1:10000

WB 1:2000-1:10000

IF 1:200-1:1000

ELISA 1:5000-1:20000

IP 1:50-1:200

Storage

Storage* -15°C to -25°C/1 year(Do not lower than -25°C)

Basic Information

Clonality Monoclonal

Clone Number ANT0011R

Target Information

Endogenous

Gene name HMOX1 HO HO1
Protein Name HO-1

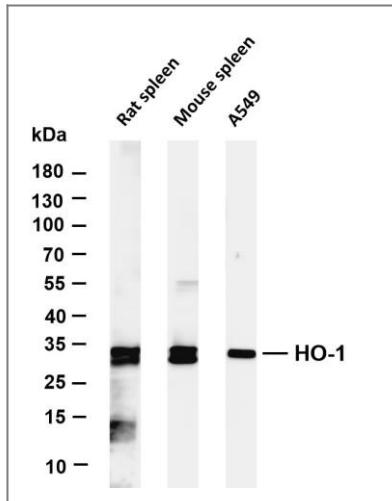
Organism	Gene ID	UniProt ID
Human	3162;	P09601;
Mouse	15368;	P14901;
Rat	24451;	P06762;

Cellular Localization Endoplasmic reticulum membrane

Tissue specificity Expressed at higher levels in renal cancer tissue than in normal tissue (at protein level).

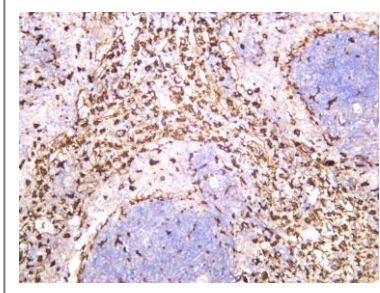
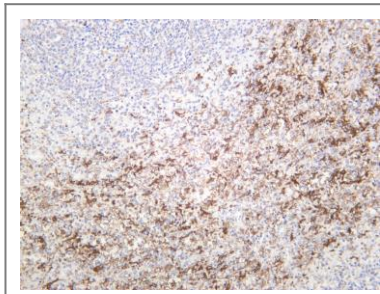
Function Catalytic activity:Heme + 3 AH(2) + 3 O(2) = biliverdin + Fe(2+) + CO + 3 A + 3 H(2)O.,Function:Heme oxygenase cleaves the heme ring at the alpha methene bridge to form biliverdin. Biliverdin is subsequently converted to bilirubin by biliverdin reductase. Under physiological conditions, the activity of heme oxygenase is highest in the spleen, where senescent erythrocytes are sequestered and destroyed.,induction:Heme oxygenase 1 activity is highly inducible by its substrate heme and by various non-heme substances
such as heavy metals, bromobenzene, endotoxin, oxidizing agents and UVA.,similarity:Belongs to the heme oxygenase family.,

Validation Data



Various whole cell lysates were separated by 4-20% SDS-PAGE, and the membrane was blotted with anti-HO-1 (ANT0011R) antibody. The HRPconjugated Goat anti-Rabbit IgG(H + L) antibody was used to detect the antibody. Lane 1: Rat spleen Lane 2: Mouse spleen Lane 3: A549 Predicted band size: 33kDa Observed band size: 33kDa

Human spleen was stained with anti-HO-1 (ANT0011R) rabbit antibody



Rat spleen was stained with anti-HO-1 (ANT0011R) rabbit antibody

For Research use only, not for diagnostics and clinical use
Contact Antagene Inc Tel 1-866-964-2589 Email: info@antageneinc.com