



## Mouse Monoclonal Antibody **HO-1** conjugated to Sepharose Beads

CatalogNo: **ANT8337-S**

Size 200ul

Storage Store at 4 °C for frequent use

### Description

This Antagene antibody is immobilized via covalent binding of primary amino groups to N-hydroxysuccinimide (NHS)-activated sepharose beads. It is useful for immunoprecipitation assays.

### **HO-1 (ANT0011R) Rabbit mAb**

Formulation: 50% slurry in PBS pH 7.2 with 0.01mg NaN<sub>3</sub> preservative.

#### Host Species

- Rabbit
- Human, Mouse, Rat,

#### Reactivity

- WB, IHC, IF, IP, ELISA

#### Applications

#### MW

- 33kD (Calculated)
- 33kD (Observed)
- IgG, Kappa

#### Isotype

## Recommended Dilution Ratios

### IP

## Basic Information

#### Clonality

Monoclonal

ANT0011R

## Immunogen Information

Endogenous

HMOX1 HO HO1

HO-1

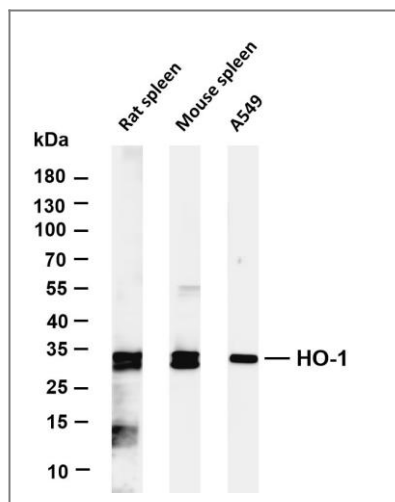
Organism	Gene ID	UniProt ID
Human	<a href="#">3162</a> ;	<a href="#">P09601</a> ;
Mouse	<a href="#">15368</a> ;	<a href="#">P14901</a> ;
Rat	<a href="#">24451</a> ;	<a href="#">P06762</a> ;

Endoplasmic reticulum membrane

Expressed at higher levels in renal cancer tissue than in normal tissue (at protein level).

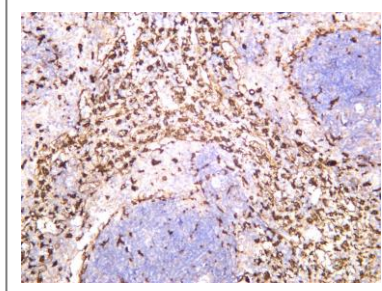
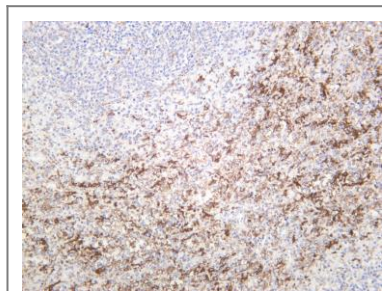
Catalytic activity:  $\text{Heme} + 3 \text{ AH}(2) + 3 \text{ O}(2) = \text{biliverdin} + \text{Fe}(2+) + \text{CO} + 3 \text{ A} + 3 \text{ H}(2)\text{O}$ ., Function: Heme oxygenase cleaves the heme ring at the alpha methene bridge to form biliverdin. Biliverdin is subsequently converted to bilirubin by biliverdin reductase. Under physiological conditions, the activity of heme oxygenase is highest in the spleen, where senescent erythrocytes are sequestered and destroyed., induction: Heme oxygenase 1 activity is highly inducible by its substrate heme and by various non-heme substances  
such as heavy metals, bromobenzene, endotoxin, oxidizing agents and UVA., similarity: Belongs to the heme oxygenase family.,

## Validation Data



Various whole cell lysates were separated by 4-20% SDS-PAGE, and the membrane was blotted with anti-HO-1 (ANT0011R) antibody. The HRPconjugated Goat anti-Rabbit IgG(H + L) antibody was used to detect the antibody. Lane 1: Rat spleen Lane 2: Mouse spleen Lane 3: A549 Predicted band size: 33kDa Observed band size: 33kDa

Human spleen was stained with anti-HO-1 (ANT0011R) rabbit antibody



Rat spleen was stained with anti-HO-1 (ANT0011R) rabbit antibody

For Research use only, not for diagnostics and clinical use  
Contact Antagene Inc Tel 1-866-964-2589 Email: [info@antageneinc.com](mailto:info@antageneinc.com)