



## Mouse Monoclonal Antibody **ERK1/2** conjugated to Sepharose Beads

CatalogNo: **ANT8336-S**

Size 200ul

Storage Store at 4 °C for frequent use

### Description

This Antagene antibody is immobilized via covalent binding of primary amino groups to N-hydroxysuccinimide (NHS)-activated sepharose beads. It is useful for immunoprecipitation assays.

### **ERK1/2 (ANT0010R) Rabbit mAb**

Formulation: 50% slurry in PBS pH 7.2 with 0.01mg NaN3a3 preservative.

#### Host Species

- Rabbit

#### MW

- 43kD,41kD (Calculated)
- 43kD,41kD (Observed)

#### Reactivity

- Human,Mouse,Rat,

#### Isotype

- IgG,Kappa

#### Applications

- WB,IHC,IF,IP,ELISA

## Recommended Dilution Ratios

IP

### Basic Information

**Clonality** Monoclonal

**Clone Number** ANT0010R

# Immunogen Information

Specificity Endogenous

Gene name MAPK1/MAPK3

Protein Name Mitogen-activated protein kinase 3

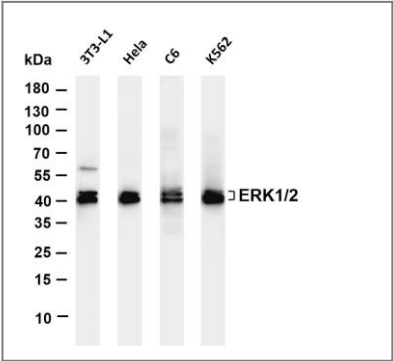
| Organism | Gene ID  | UniProt ID  |
|----------|--|---|
| Human    | <a href="#">5595</a> ; <a href="#">5594</a> ;    | <a href="#">P28482</a> , <a href="#">P27361</a> ; |
| Mouse    | <a href="#">26417</a> ; <a href="#">26413</a> ;  |   |
| Rat      | <a href="#">50689</a> ; <a href="#">116590</a> ; | <a href="#">P21708</a> ; <a href="#">P63086</a> ; |

Cellular Localization Cytoplasm, Nucleus

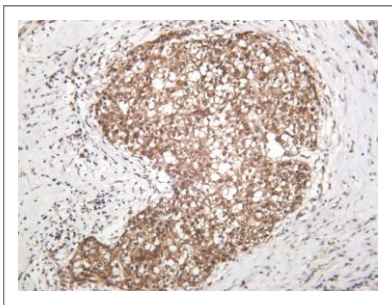
Tissue specificity Epithelium, Eye, Hepatoma, Human cervix, Lymph,

Function Catalytic activity:ATP + a protein = ADP + a phosphoprotein.,cofactor:Magnesium.,Domain:The TXY motif contains the threonine and tyrosine residues whose phosphorylation activates the MAP kinases.,enzyme regulation:Activated by tyrosine phosphorylation in response to insulin and NGF.,Function:Involved in both the initiation and regulation of meiosis, mitosis, and postmitotic functions in differentiated cells by phosphorylating a number of transcription factors such as ELK-1. Phosphorylates EIF4EBP1; required for initiation of translation. Phosphorylates microtubule-associated protein 2 (MAP2). Phosphorylates SPZ1 (By similarity). Phosphorylates heat shock factor protein 4 (HSF4).,ANTM:Dually phosphorylated on Thr-202 and Tyr-204, which activates the enzyme.,similarity:Belongs to the protein kinase superfamily.,similarity:Belongs to the protein kinase superfamily. CMGC Ser/Thr protein kinase family. MAP kinase subfamily.,similarity:Contains 1 protein kinase domain.,subunit:Interacts with MORG1 (By similarity). Binds to HIV-1 Nef. This interaction inhibits its kinase activity. Interacts with HSF4 and NISCH.,

# Validation Data



Various whole cell lysates were separated by 4-20% SDS-PAGE, and the membrane was blotted with anti-ERK1/2 (ANT0010R) antibody. The HRPconjugated Goat anti-Rabbit IgG(H + L) antibody was used to detect the antibody. Lane 1: 3T3-L1 Lane 2: HeLa Lane 3: C6 Lane 4: K562 Predicted band size: 43,41kDa Observed band size: 43,41kDa



Human breast carcinoma was stained with anti-ERK1/2 (PT0510R) rabbit antibody

---

For Research use only, not for diagnostics and clinical use  
Contact Antagene Inc Tel 1-866-964-2589 Email: [info@antageneinc.com](mailto:info@antageneinc.com)