



Beclin 1 (ANT0006R) Rabbit mAb

CatalogNo: ANT8333 **Recombinant R**

Formulation: PBS,50%glycerol,0.05%Proclin 300,0.05%BSA
Quantity : 100 ug/vial

Host Species

- Rabbit
- Human,Mouse,Rat,

Reactivity

- WB,IHC,IF,IP,ELISA

Applications

MW

- 52kD (Calculated)
- IgG,Kappa
- 60kD (Observed)

Isotype

Recommended Dilution Ratios

IHC 1:200-1:1000

WB 1:2000-1:10000

IF 1:200-1:1000

ELISA 1:5000-1:20000

IP 1:50-1:200

Storage

Storage* -15°C to -25°C/1 year(Do not lower than -25°C)

Basic Information

Clonality Monoclonal

Clone Number ANT0006R

Target Information

Endogenous

Gene name BECN1 GT197
Protein Name Beclin-1 (Ser15)

Organism	Gene ID	UniProt ID
Human	8678 ;	Q14457 ;
Mouse	56208 ;	O88597 ;
Rat	114558 ;	Q91XJ1 ;

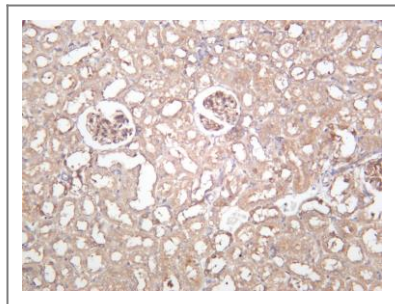
Cellular Cytoplasm
Localization

Tissue specificity Ubiquitous.

Function Function:Plays a central role in autophagy (By similarity). May play a role in antiviral host defense. Protects against infection by a neurovirulent strain of Sindbis virus.,similarity:Belongs to the beclin family.,subcellular location:Expressed in dendrites and cell bodies of cerebellar Purkinje cells.,subunit:Interacts with GOPC and GRID2. Interacts with AMBRA1. Probably forms a complex with AMBRA1 and PIK3C3 (By similarity). Interacts with BCL2 and BCL2L1.,tissue specificity:Ubiquitous.,

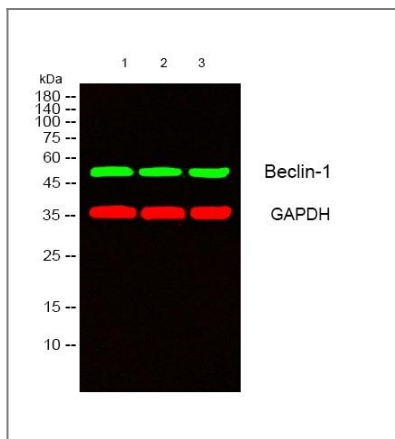
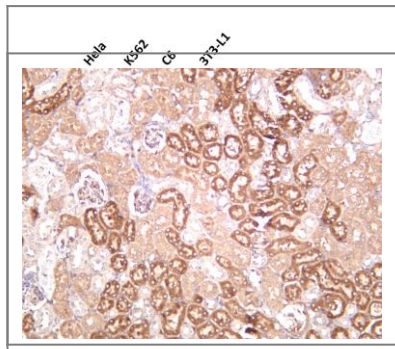
Validation Data

Rat kidney was stained with anti-Beclin 1 (ANT0006R) rabbit antibody



Various whole cell lysates were separated by 4-20% SDS-PAGE, and the membrane was blotted with anti-Beclin 1 (ANT0006R) antibody. The HRPconjugated Goat anti-Rabbit IgG(H + L) antibody was used to detect the antibody. Lane 1: Hela Lane 2: K562 Lane 3: C6 Lane 4: 3T3-L1 Predicted band size: 52kDa Observed band size: 60kDa

Mouse kidney was stained with anti-Beclin 1 (ANT0006R) rabbit antibody



Western blot analysis of lysates from 1) mouse-brain , 2) mouse-lung, 3) Hela cells, (Green) primary antibody was diluted at 1:1000, 4°over night, secondary antibody(cat:RS23920)was diluted at 1:10000, 37° 1hour. (Red)

GAPDH Monoclonal Antibody(2B8) (cat:YM3029) antibody was diluted at 1:5000 as loading control, 4° over night,secondary antibody(cat:RS23710)was diluted at 1:10000, 37° 1hour.

For Research use only, not for diagnostics and clinical use
Contact Antagene Inc Tel 1-866-964-2589 Email: info@antageneinc.com