



Mouse Monoclonal Antibody **Beclin 1** conjugated to Sepharose Beads

CatalogNo: **ANT8333-M**

Size 200ul

Storage Store at 4 °C for frequent use

Description

This Antagene antibody is immobilized by the covalent reaction of hydrazinonicotinamide-modified antibody with formylbenzamide-modified beads. It is useful for immunoprecipitation.

Beclin 1 (ANT0006R) Rabbit mAb

Formulation: Each vial contains 1mg/ml Magnetic Bead in PBS, pH 7.2, 0.05mg ANa₃.

Host Species

- Rabbit
- Human, Mouse, Rat,

Reactivity

- WB, IHC, IF, IP, ELISA

Applications

MW

- 52kD (Calculated)
- IgG, Kappa
- 60kD (Observed)

Isotype

Recommended Dilution Ratios

IP

Basic Information

Clonality

Monoclonal

Clone Number ANT0006R

Immunogen Information

Specificity Endogenous

Gene name BECN1 GT197

Protein Name Beclin-1 (Ser15)

Organism	Gene ID	UniProt ID
Human	8678;	Q14457;
Mouse	56208;	O88597;
Rat	114558;	Q91XJ1;

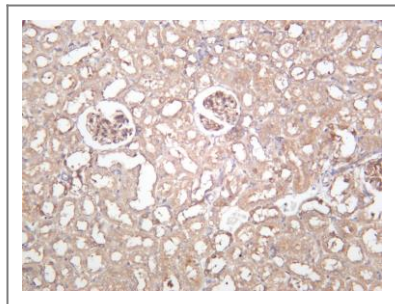
Cellular Localization Cytoplasm

Tissue specificity Ubiquitous.

Function Function:Plays a central role in autophagy (By similarity). May play a role in antiviral host defense. Protects against infection by a neurovirulent strain of Sindbis virus.,similarity:Belongs to the beclin family.,subcellular location:Expressed in dendrites and cell bodies of cerebellar Purkinje cells.,subunit:Interacts with GOPC and GRID2. Interacts with AMBRA1. Probably forms a complex with AMBRA1 and PIK3C3 (By similarity). Interacts with BCL2 and BCL2L1.,tissue specificity:Ubiquitous.,

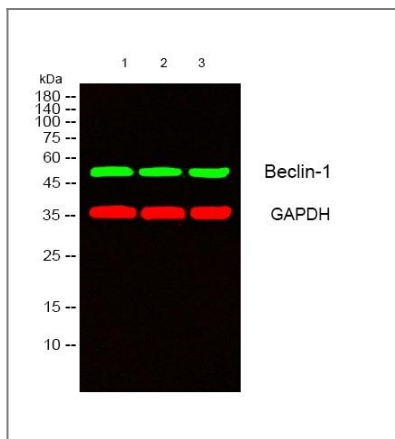
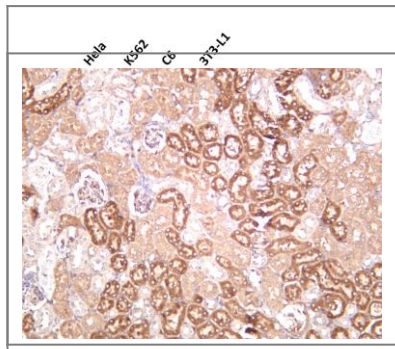
Validation Data

Rat kidney was stained with anti-Beclin 1 (ANT0006R) rabbit antibody



Various whole cell lysates were separated by 4-20% SDS-PAGE, and the membrane was blotted with anti-Beclin 1 (ANT0006R) antibody. The HRPconjugated Goat anti-Rabbit IgG(H + L) antibody was used to detect the antibody. Lane 1: Hela Lane 2: K562 Lane 3: C6 Lane 4: 3T3-L1 Predicted band size: 52kDa Observed band size: 60kDa

Mouse kidney was stained with anti-Beclin 1 (ANT0006R) rabbit antibody



Western blot analysis of lysates from 1) mouse-brain , 2) mouse-lung, 3) Hela cells, (Green) primary antibody was diluted at 1:1000, 4°over night, secondary antibody(cat:RS23920)was diluted at 1:10000, 37° 1hour. (Red)

GAPDH Monoclonal Antibody(2B8) (cat:YM3029) antibody was diluted at 1:5000 as loading control, 4° over night,secondary antibody(cat:RS23710)was diluted at 1:10000, 37° 1hour.

For Research use only, not for diagnostics and clinical use
Contact Antagene Inc Tel 1-866-964-2589 Email: info@antageneinc.com