

## β Tubulin (ANT0005R) Rabbit mAb

CatalogNo: ANT8332 **Recombinant** 

Formulation: PBS,50%glycerol,0.05%Proclin 300,0.05%BSA  
Quantity : 100 ug/vial

### Host Species

- Rabbit
- Human,Mouse,Rat,

### Reactivity

- WB,IHC,IF,IP,ELISA

### Applications

### MW

- 50kD (Calculated)
  - IgG,Kappa
- 50kD (Observed)

### Isotype

## Recommended Dilution Ratios

IHC 1:2000-1:10000

WB 1:2000-1:10000

IF 1:200-1:1000

ELISA 1:5000-1:20000

IP 1:50-1:200

## Storage

**Storage\*** -15°C to -25°C/1 year(Do not lower than -25°C)

## Basic Information

**Clonality** Monoclonal

**Clone Number** ANT0005R

## Target Information

# Immunogen Information Specificity

Endogenous

Gene name TUBB  
Protein Name Tubulin beta chain (Tubulin beta-5 chain)

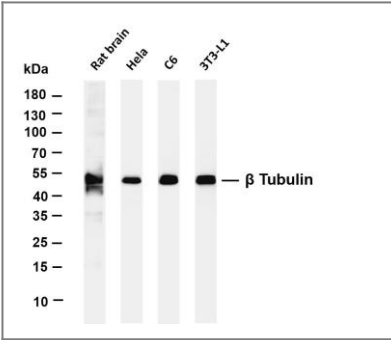
Organism	Gene ID	UniProt ID
Human	<a href="#">203068;</a>	<a href="#">P07437;</a>
Mouse		<a href="#">P99024;</a>
Rat		<a href="#">P69897;</a>

Cellular Localization Cytoplasm

Tissue specificity Ubiquitously expressed with highest levels in spleen, thymus and immature brain.

Function Domain:The highly acidic C-terminal region may bind cations such as calcium.,Function:Tubulin is the major constituent of microtubules. It binds two moles of GTP, one at an exchangeable site on the beta chain and one at a non-exchangeable site on the alpha-chain.,online information:Tubulin entry,similarity:Belongs to the tubulin family.,subunit:Dimer of alpha and beta chains.,tissue specificity:Ubiquitously expressed with highest levels in spleen, thymus and immature brain.,

## Validation Data



Various whole cell lysates were separated by 4-20% SDS-PAGE, and the membrane was blotted with anti-β Tubulin (ANT0005R) antibody. The HRPconjugated Goat anti-Rabbit IgG(H + L) antibody was used to detect the antibody. Lane 1: Rat brain Lane 2: HeLa Lane 3: C6 Lane 4: 3T3-L1 Predicted band size: 50kDa Observed band size: 50kDa

For Research use only, not for diagnostics and clinical use  
Contact Antagene Inc Tel 1-866-964-2589 Email: [info@antageneinc.com](mailto:info@antageneinc.com)