



Mouse Monoclonal Antibody β Tubulin conjugated to Sepharose Beads

CatalogNo: **ANT8332-M**

Size 200ul

Storage Store at 4 °C for frequent use

Description

This Antagene antibody is immobilized by the covalent reaction of hydrazinonicotinamide-modified antibody with formylbenzamide-modified beads. It is useful for immunoprecipitation.

β Tubulin (ANT0005R) Rabbit mAb

Formulation: Each vial contains 1mg/ml Magnetic Bead in PBS, pH 7.2, 0.05mg ANaN3.

Host Species

- Rabbit
- Human, Mouse, Rat,

Reactivity

- WB, IHC, IF, IP, ELISA

Applications

MW

- 50kD (Calculated)
- 50kD (Observed)
- IgG, Kappa

Isotype

Recommended Dilution Ratios

IP

Basic Information

Clonality Monoclonal

Clone Number ANT0005R

Immunogen Information

Specificity Endogenous

Gene name TUBB

Protein Name Tubulin beta chain (Tubulin beta-5 chain)

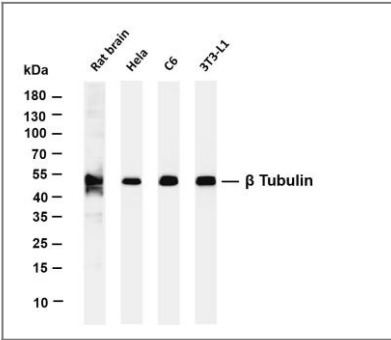
Organism	Gene ID	UniProt ID
Human	203068;	P07437;
Mouse		P99024;
Rat		P69897;

Cellular Localization Cytoplasm

Tissue specificity Ubiquitously expressed with highest levels in spleen, thymus and immature brain.

Function Domain:The highly acidic C-terminal region may bind cations such as calcium.,Function:Tubulin is the major constituent of microtubules. It binds two moles of GTP, one at an exchangeable site on the beta chain and one at a non-exchangeable site on the alpha-chain.,online information:Tubulin entry,similarity:Belongs to the tubulin family.,subunit:Dimer of alpha and beta chains.,tissue specificity:Ubiquitously expressed with highest levels in spleen, thymus and immature brain.,

Validation Data



Various whole cell lysates were separated by 4-20% SDS-PAGE, and the membrane was blotted with anti-β Tubulin (ANT0005R) antibody. The HRPconjugated Goat anti-Rabbit IgG(H + L) antibody was used to detect the antibody. Lane 1: Rat brain Lane 2: HeLa Lane 3: C6 Lane 4: 3T3-L1 Predicted band size: 50kDa Observed band size: 50kDa

For Research use only, not for diagnostics and clinical use
Contact Antagene Inc Tel 1-866-964-2589 Email: info@antageneinc.com