



Mouse Monoclonal Antibody **YAP** conjugated to Sepharose Beads

CatalogNo: **ANT8331-S**

Size 200ul

Storage Store at 4 °C for frequent use

Description

This Antagene antibody is immobilized via covalent binding of primary amino groups to N-hydroxysuccinimide (NHS)-activated sepharose beads. It is useful for immunoprecipitation assays.

YAP (ANT0004R) Rabbit mAb

Formulation: 50% slurry in PBS pH 7.2 with 0.01mg NaN₃ preservative.

Host Species

- Rabbit
- Human, Mouse, Rat,

Reactivity

- WB, IHC, IF, IP, ELISA

Applications

MW

- 55kD (Calculated)
 - IgG, Kappa
- 55-75kD (Observed)

Isotype

Recommended Dilution Ratios

IP

Basic Information

Clonality

Monoclonal

Clone Number ANT0004R

Immunogen Information

Specificity Endogenous

Gene name YAP1

Protein Name Yorkie homolog

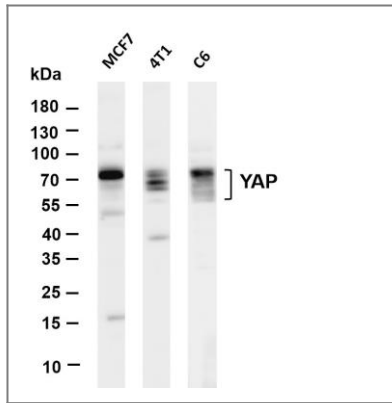
Organism	Gene ID	UniProt ID
Human	10413 ;	P46937 ;
Mouse	22601 ;	P46938 ;
Rat	363014 ;	Q2EJA0 ;

**Cellular
Localization** Cytoplasm, Nucleus

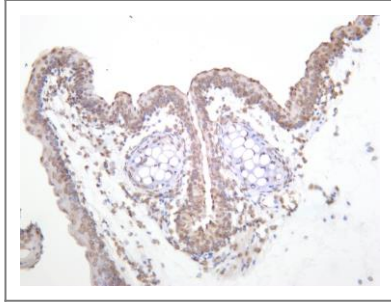
Tissue specificity Increased expression seen in some liver and prostate cancers. Isoforms lacking the transactivation domain found in striatal neurons of patients with Huntington disease (at protein level).

Function ANTM:Phosphorylated upon DNA damage, probably by ATM or ATR.,similarity:Contains 1 WW domain.,subunit:Binds to the SH3 domain of the YES kinase. Binds to WBP1 and WBP2. Binds, in vitro, through the WW1 domain, to neural isoforms of ENAH that contain the PPSY motif,

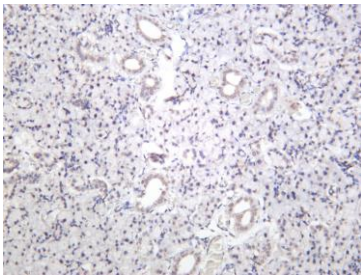
Validation Data



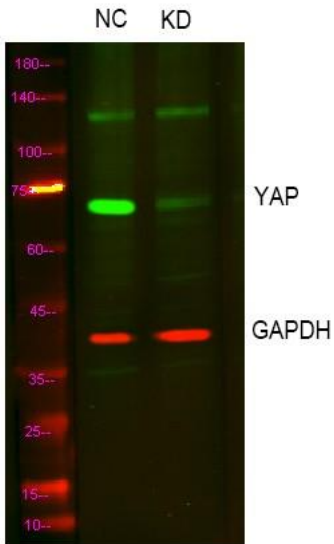
Various whole cell lysates were separated by 4-20% SDS-PAGE, and the membrane was blotted with anti-YAP (ANT0004R) antibody. The HRPconjugated Goat anti-Rabbit IgG(H + L) antibody was used to detect the antibody. Lane 1: MCF7 Lane 2: 4T1 Lane 3: C6
Predicted band size: 55kDa
Observed band size: 55-75kDa



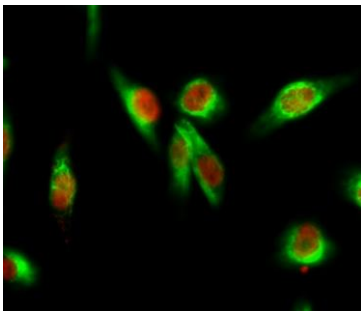
Mouse thyroid was stained with anti-YAP (ANT0004R) rabbit antibody



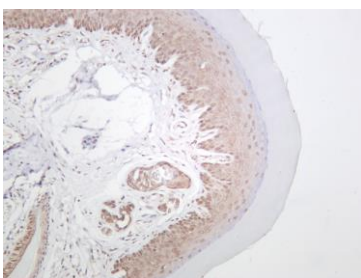
Rat thyroid was stained with anti-YAP (ANT0004R) rabbit antibody



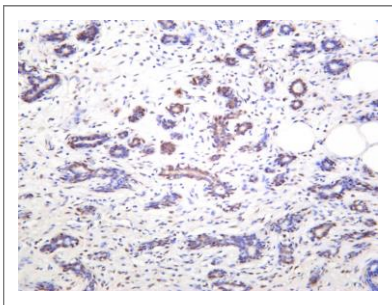
Western blot analysis of lysates from 1)Hela cell , 2)Hela cells knockdown by siRNA (F:GGUCAGAGAUACUUCUUAATT,R:UUAAGAAGUAUCUCUGACCTT), (Green) primary antibody was diluted at 1:1000, 4°over night, Dylight 800 secondary antibody(Immunoway:RS23920)was diluted at 1:10000, 37° 1hour. (Red) GAPDH Monoclonal Antibody(5B7) (Immunoway:YM3029) antibody was diluted at 1:5000 as loading control, 4° over night, Dylight 680 secondary antibody(Immunoway:RS23710)was diluted at 1:10000, 37° 1hour.



Immunofluorescence analysis of Hela cell. 1,YAP Antibody(red) was diluted at 1:200(4° overnight). GAPDH Monoclonal Antibody(2B8)(green) was diluted at 1:200(4° overnight). 2, Goat Anti Rabbit Alexa Fluor 594 Catalog:RS3611 was diluted at 1:1000(room temperature, 50min). Goat Anti Mouse Alexa Fluor 488 Catalog:RS3208 was diluted at 1:1000(room temperature, 50min).



Mouse skin was stained with anti-YAP (ANT0004R) rabbit antibody



Human breast carcinoma was stained with anti-YAP (PT0504R) rabbit antibody

For Research use only, not for diagnostics and clinical use
Contact Antagene Inc Tel 1-866-964-2589 Email: info@antageneinc.com