



## Mouse Monoclonal Antibody **IKK $\alpha$** conjugated to Sepharose Beads

CatalogNo: **ANT8329-S**

Size 200ul

Storage Store at 4 °C for frequent use

### Description

This Antagene antibody is immobilized via covalent binding of primary amino groups to N-hydroxysuccinimide (NHS)-activated sepharose beads. It is useful for immunoprecipitation assays.

### **IKK $\alpha$ (ANT0001R) Rabbit mAb**

Formulation: 50% slurry in PBS pH 7.2 with 0.01mg NaN<sub>3</sub> preservative.

#### Host Species

- Rabbit
- Human, Mouse, Rat,

#### Reactivity

- WB, IHC, IF, IP, ELISA

#### Applications

#### MW

- 85kD (Calculated)
  - IgG, Kappa
- 85kD (Observed)

#### Isotype

## **Recommended Dilution Ratios**

### **IP**

## **Basic Information**

<b>Clonality</b>	Monoclonal
------------------	------------

<b>Clone Number</b>	ANT0001R
---------------------	----------

# Immunogen Information

**Specificity** Endogenous

**Gene name** CHUK

**Protein Name** Inhibitor of nuclear factor kappa-B kinase subunit alpha

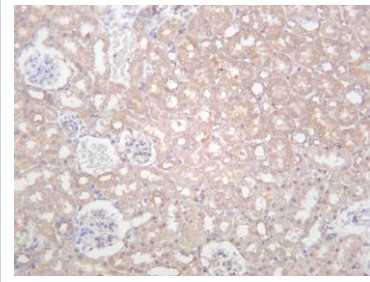
Organism	Gene ID	UniProt ID
Human	<a href="#">1147</a> ;	<a href="#">O15111</a> ;
Mouse		<a href="#">Q60680</a> ;

**Cellular Localization** Cytoplasm, Nucleus

**Tissue specificity** Widely expressed.

**Function** Catalytic activity:ATP + [I-kappa-B protein] = ADP + [I-kappa-B phosphoprotein].,enzyme regulation:Activated when phosphorylated and inactivated when dephosphorylated.,Function:Acts as part of the IKK complex in the conventional pathway of NF-kappa-B activation and phosphorylates inhibitors of NF-kappa-B thus leading to the dissociation of the inhibitor/NF-kappa-B complex and ultimately the degradation of the inhibitor. As part of the non-canonical pathway of NF-kappa-B activation, the MAP3K14activated CHUK/IKKA homodimer phosphorylates NFKB2/p100 associated with RelB, inducing its proteolytic processing to NFKB2/p52 and the formation of NF-kappa-B RelB-p52 complexes. Also phosphorylates NCOA3. Phosphorylates 'Ser-10' of histone H3 at NF-kappaB-regulated promoters during inflammatory responses triggered by cytokines.,ANTM:Phosphorylated by MAP3K14/NIK, AKT and to a lesser extent by MEKK1, and dephosphorylated by PP2A. Autophosphorylated.,similarity:Belongs to the protein kinase superfamily.,similarity:Belongs to the protein kinase superfamily. Ser/Thr protein kinase family. I-kappa-B kinase subfamily.,similarity:Contains 1 protein kinase domain.,subcellular location:Shuttles between the cytoplasm and the nucleus.,subunit:Component of the Ikappa-B-kinase (IKK) core complex consisting of CHUK, IKBKB and IKBKG; probably four alpha/CHUK-beta/IKBKB dimers are associated with four gamma/IKBKG subunits. The IKK core complex seems to associate with regulatory or adapter proteins to form a IKKsignalosome holo-complex. Part of a complex composed of NCOA2, NCOA3, CHUK/IKKA, IKBKB, IKBKG and CREBBP. Part of a 70-90 kDa complex at least consisting of CHUK/IKKA, IKBKB, NFKBIA, RELA, IKBKAP and MAP3K14. Directly interacts with IKK-gamma/NEMO and TRPC4AP (By similarity). May interact with TRAF2. Interacts with NALP2. May interact with MAVS/IPS1.,tissue specificity:Widely expressed.,

## Validation Data



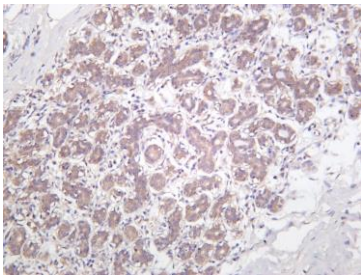
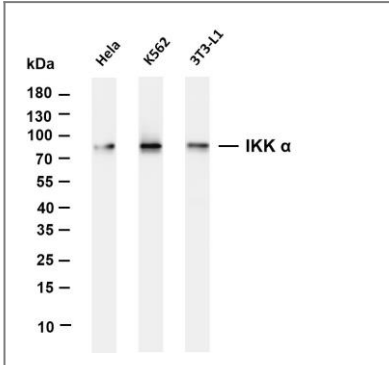
Rat kidney was stained with anti-IKK  $\alpha$  (ANT0001R)

rabbit antibody

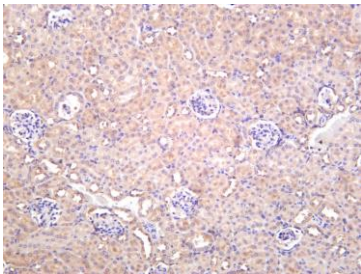
Various whole cell lysates were separated by 4-20% SDS-PAGE, and the membrane was blotted with anti-IKK  $\alpha$  (ANT0001R) antibody. The HRPconjugated Goat anti-Rabbit IgG(H + L) antibody was used to detect the antibody. Lane 1: HeLa Lane 2: K562 Lane 3: 3T3-L1

Predicted band size:

85kDa Observed band size: 85kDa



Human breast carcinoma was stained with anti-IKK  $\alpha$  (ANT0001R) rabbit antibody



Mouse kidney was stained with anti-IKK  $\alpha$  (ANT0001R) rabbit antibody

For Research use only, not for diagnostics and clinical use  
Contact Antagene Inc Tel 1-866-964-2589 Email: [info@antageneinc.com](mailto:info@antageneinc.com)