



## HMGB1 (ANT0099R) Rabbit mAb

CatalogNo: ANT8327 **Recombinant R**

Formulation: PBS,50%glycerol,0.05%Proclin 300,0.05%BSA  
Quantity : 100 ug/vial

### Host Species

- Rabbit
- Human,Mouse,Rat,

### Reactivity

- WB,IHC,IF,IP,ELISA

### Applications

### MW

- 25kD (Calculated)
  - IgG,Kappa
- 25kD (Observed)

### Isotype

## Recommended Dilution Ratios

IHC 1:2000-1:10000

WB 1:5000-1:10000

IF 1:200-1:1000

ELISA 1:5000-1:20000

IP 1:50-1:200

## Storage

**Storage\*** -15°C to -25°C/1 year(Do not lower than -25°C)

## Basic Information

**Clonality** Monoclonal

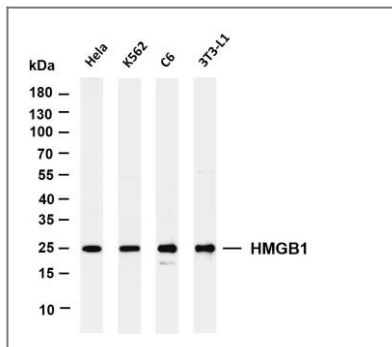
**Clone Number** ANT0099R

Endogenous

Target Information

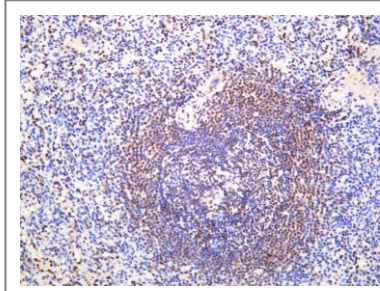
Gene name	HMGB1 HMG1		
Protein Name	High mobility group protein B1 (High mobility group protein 1) (HMG-1)		
Cellular Localization	Organism	Gene ID	UniProt ID
	Human	<a href="#">3146;</a>	<a href="#">P09429;</a>
	Mouse	<a href="#">100862258;</a>	<a href="#">P63158;</a>
	Rat	<a href="#">25459;</a>	<a href="#">P63159;</a>
	Nucleus		
Tissue specificity	Ubiquitous. Expressed in platelets (PubMed:11154118).		
Function	Function: Binds preferentially single-stranded DNA and unwinds double stranded DNA.,similarity: Belongs to the HMGB family.,similarity: Contains 2 HMG box DNA-binding domains.,		

## Validation Data



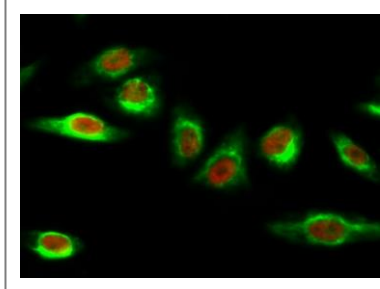
Various whole cell lysates were separated by 4-20% SDS-PAGE, and the membrane was blotted with anti-HMGB1 (ANT0099R) antibody. The HRPconjugated Goat anti-Rabbit IgG(H + L) antibody was used to detect the antibody. Lane 1: HeLa Lane 2: K562 Lane 3: C6 Lane 4: 3T3-L1 Predicted band size: 25kDa Observed band size: 25kDa

Human spleen was stained with anti-HMGB1 (ANT0099R) rabbit antibody



Immunofluorescence analysis of HeLa cell. 1, HMG-1 Antibody (red) was diluted at 1:200 (4° overnight). Caspase 9 Monoclonal Antibody (3-20) (green) was diluted at 1:200 (4° overnight). 2, Goat Anti Rabbit Alexa Fluor 594

Catalog: RS3611 was diluted at 1:1000 (room temperature, 50min). Goat Anti Mouse Alexa Fluor 488 Catalog: RS3208 was diluted at 1:1000 (room temperature, 50min).



For Research use only, not for diagnostics and clinical use  
Contact Antagene Inc Tel 1-866-964-2589 Email: [info@antageneinc.com](mailto:info@antageneinc.com)