



Mouse Monoclonal Antibody **Vimentin** conjugated to Sepharose Beads

CatalogNo: **ANT8324-S**

Size 200ul

Storage Store at 4 °C for frequent use

Description

This Antagene antibody is immobilized via covalent binding of primary amino groups to N-hydroxysuccinimide (NHS)-activated sepharose beads. It is useful for immunoprecipitation assays.

Vimentin (ANT0095R) Rabbit mAb

Formulation: 50% slurry in PBS pH 7.2 with 0.01mg NaN₃ preservative.

Host Species

- Rabbit
- Human, Mouse, Rat,

Reactivity

- WB, IHC, IF, IP, ELISA

Applications

MW

- 54kD (Calculated)
- 54kD (Observed)
- IgG, Kappa

Isotype

Recommended Dilution Ratios

IP

Basic Information

Clonality

Monoclonal

Clone Number ANT0095R

Immunogen Information

Specificity Endogenous

Gene name VIM

Protein Name Vimentin

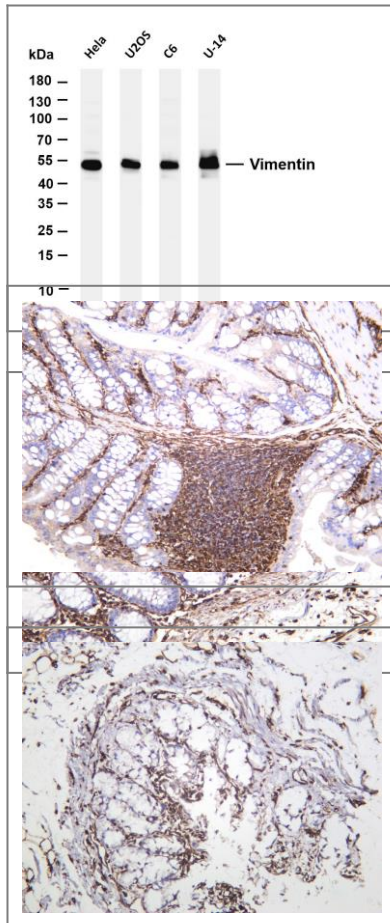
Organism	Gene ID	UniProt ID
Human	7431 ;	P08670 ;
Mouse	22352 ;	P20152 ;
Rat	81818 ;	P31000 ;

Cellular Localization Cytoplasm

Tissue specificity Highly expressed in fibroblasts, some expression in T- and B-lymphocytes, and little or no expression in Burkitt's lymphoma cell lines. Expressed in many hormone-independent mammary carcinoma cell lines.

Function Function:Vimentins are class-III intermediate filaments found in various non-epithelial cells, especially mesenchymal cells.,online information:Vimentin entry,ANTM:One of the most prominent phosphoproteins in various cells of mesenchymal origin. Phosphorylation is enhanced during cell division, at which time vimentin filaments are significantly reorganized.,sequence Caution:Intron retention.,similarity:Belongs to the intermediate filament family.,subunit:Homopolymer. Interacts with HCV core protein. Interacts with LGSN and SYNM.,tissue specificity:Highly expressed in fibroblasts, some expression in T- and Blymphocytes, and little or no expression in Burkitt's lymphoma cell lines. Expressed in many hormone-independent mammary carcinoma cell lines.,

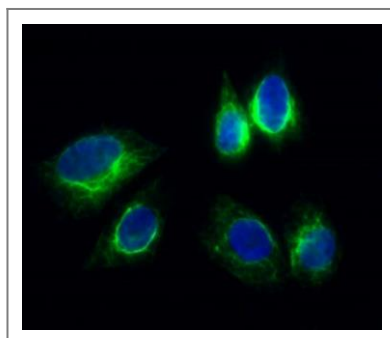
Validation Data



Various whole cell lysates were separated by 4-20% SDS-PAGE, and the membrane was blotted with anti-Vimentin (ANT0095R) antibody. The HRPconjugated Goat anti-Rabbit IgG(H + L) antibody was used to detect the antibody. Lane 1: HeLa Lane 2: U2OS Lane 3: C6 Lane 4: U-14 Predicted band size: 54kDa Observed band size: 54kDa

Human colon was stained with anti-Vimentin (ANT0095R) rabbit antibody
Mouse colon was stained with anti-Vimentin (ANT0095R) rabbit antibody

Rat colon was stained with anti-Vimentin (ANT0095R) rabbit antibody



Immunofluorescence analysis of HeLa cell. 1,Vimentin Antibody(green) was diluted at 1:200(4° overnight). 2, Goat Anti Rabbit Alexa Fluor 488 Catalog:RS3211 was diluted at 1:1000(room temperature, 50min). 3 DAPI(blue) 10min.

For Research use only, not for diagnostics and clinical use
Contact Antagene Inc Tel 1-866-964-2589 Email: info@antageneinc.com