



## Mouse Monoclonal Antibody **Bcl-2** conjugated to Sepharose Beads

CatalogNo: **ANT8319-M**

Size 200ul

Storage Store at 4 °C for frequent use

### Description

This Antagene antibody is immobilized by the covalent reaction of hydrazinonicotinamide-modified antibody with formylbenzamide-modified beads. It is useful for immunoprecipitation.

### **Bcl-2 (ANT0087R) Rabbit mAb**

Formulation: Each vial contains 1mg/ml Magnetic Bead in PBS, pH 7.2, 0.05mg ANaN3.

#### Host Species

- Rabbit
- Human, Mouse, Rat,

#### Reactivity

- WB, IHC, IF, IP, ELISA

#### Applications

#### MW

- 26kD (Calculated)
- IgG, Kappa
- 26kD (Observed)

#### Isotype

## Recommended Dilution Ratios

### IP

## Basic Information

**Clonality** Monoclonal

**Clone Number** ANT0087R

# Immunogen Information

Specificity      Endogenous

## Target Information

Gene name      BCL2

Protein Name      Apoptosis regulator Bcl-2

Organism	Gene ID	UniProt ID
Human	<a href="#">596</a> ;	<a href="#">P10415</a> ;
Mouse	<a href="#">12043</a> ;	<a href="#">P10417</a> ;
Rat	<a href="#">24224</a> ;	<a href="#">P49950</a> ;

Cellular      Cytoplasm

Localization

Tissue specificity      Expressed in a variety of tissues.

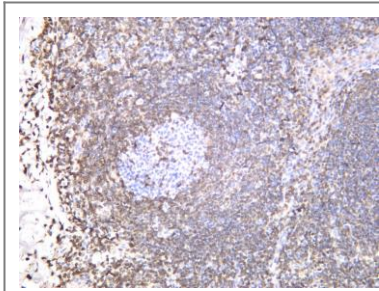
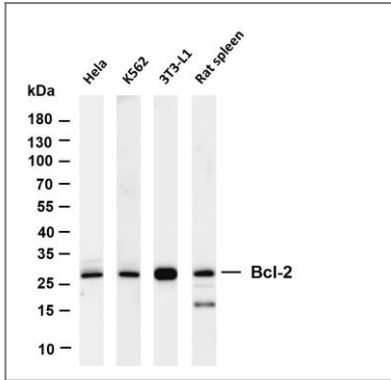
**Function**      Disease:A chromosomal aberration involving BCL2 may be a cause of follicular lymphoma (FL) [MIM:151430]; also known as type II chronic lymphatic leukemia. Translocation t(14;18)(q32;q21) with immunoglobulin gene regions. BCL2 mutations found in non-Hodgkin lymphomas carrying the chromosomal translocation could be attributed to the Ig somatic hypermutation mechanism resulting in nucleotide transitions.,Domain:The BH4 motif is required for anti-apoptotic activity and for interaction with RAF-1.,Function:Suppresses apoptosis in a variety of cell systems including factor-dependent lymphohematopoietic and neural cells. Regulates cell death by controlling the mitochondrial membrane permeability. Appears to function in a feedback loop system with caspases. Inhibits caspase activity either by preventing the release of cytochrome c from the mitochondria and/or by binding to the apoptosis-activating factor (APAF-1).,online information:Bcl-2 entry,ANTM:Phosphorylation/dephosphorylation on Ser-70 regulates anti-apoptotic activity. Growth factor-stimulated phosphorylation on Ser-70 by PKC is required for the antiapoptosis activity and occurs during the G2/M phase of the cell cycle. In the absence of growth factors, BCL2 appears to be phosphorylated by other protein kinases such as ERKs and stress-activated kinases. Dephosphorylated by protein phosphatase 2A (PP2A).,PTM:Proteolytically cleaved by caspases during apoptosis. The cleaved protein, lacking the BH4 motif, has pro-apoptotic activity, causes the release of cytochrome c into the cytosol promoting further caspase activity.,similarity:Belongs to the Bcl-2 family.,subunit:Forms homodimers, and heterodimers with BAX, BAD, BAK and Bcl-X(L). Heterodimerization with BAX requires intact BH1 and BH2 motifs, and is necessary for antiapoptotic activity (By similarity). Also interacts with APAF1, RAF-1, TP53BP2, BBC3, BCL2L1, MRPL41 and BNIPL. Binding to FKBP8 seems to target BCL2 to the mitochondria and probably interferes with the binding of BCL2 to its targets.,tissue specificity:Expressed in a variety of tissues.,

## Validation

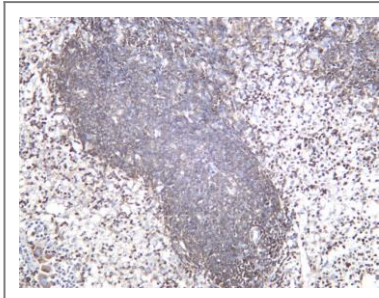
### Data

Various whole cell lysates were separated by 4-20% SDS-PAGE, and the membrane was blotted with anti-Bcl-2 (ANT0087R) antibody. The HRPconjugated Goat anti-Rabbit IgG(H + L) antibody was used to detect the antibody. Lane 1: HeLa Lane 2: K562 Lane 3: 3T3-L1 Lane 4: Rat spleen

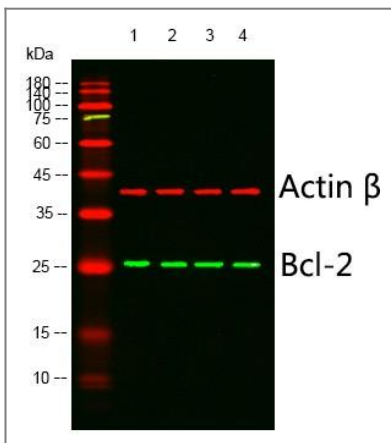
Predicted band size: 26kDa Observed band size: 26kDa



Human spleen was stained with anti-Bcl-2 (ANT0087R) rabbit antibody



Rat spleen was stained with anti-Bcl-2 (ANT0087R) rabbit antibody



Western blot analysis of lysates from 1)mouse-liver, 2)mouse-brain, 3)mouse-lung, 4)mcf-7 cells, (Green) primary antibody was diluted at 1:1000, 4° over night, Dylight 800 secondary antibody(Immunoway:RS23920)was diluted at 1:10000, 37° 1hour. (Red) Actin β Monoclonal Antibody(5B7) (Immunoway:YM3028) antibody was diluted at 1:5000 as loading control, 4° over night,Dylight 680 secondary antibody(Immunoway:RS23710)was diluted at 1:10000, 37° 1hour.