

ALPP (ANT0084R) Rabbit mAb

CatalogNo: ANT8317 **Recombinant** 

Formulation: PBS,50%glycerol,0.05%Proclin 300,0.05%BSA
Quantity : 100 ug/vial

Host Species

- Rabbit
- Human,Mouse,Rat,

Reactivity

- WB,IHC,IF,IP,ELISA

Applications

MW

- 58kD (Calculated)
- IgG,Kappa
- 70kD (Observed)

Isotype

Recommended Dilution Ratios

IHC 1:200-1:1000

WB 1:2000-1:10000

IF 1:200-1:1000

ELISA 1:5000-1:20000

IP 1:50-1:200

Storage

Storage* -15°C to -25°C/1 year(Do not lower than -25°C)

Basic Information

Clonality Monoclonal

Clone Number ANT0084R

Endogenous

Target Information

Gene name

ALPP

Protein Name

Alkaline phosphatase, placental type

Organism	Gene ID	UniProt ID
Human	250 ;	P05187 ;

Cellular
Localization

Membrane

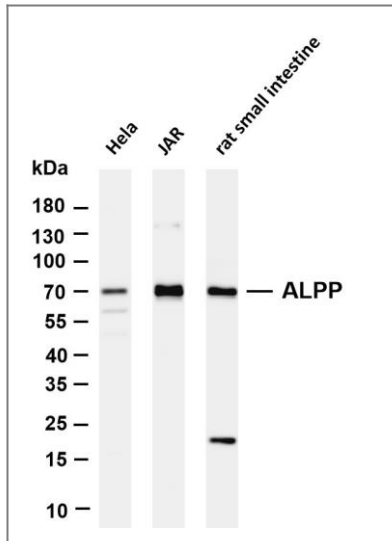
Tissue specificity

Detected in placenta (at protein level).

Function

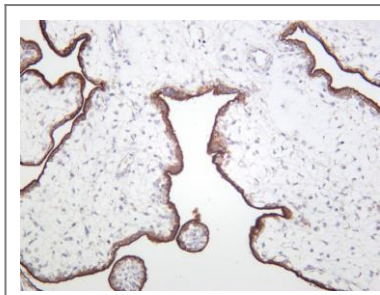
Catalytic activity:A phosphate monoester + H(2)O = an alcohol + phosphate.,cofactor:Binds 1 magnesium ion.,cofactor:Binds 2 zinc ions.,miscellaneous:In most mammals there are four different isozymes: placental, placental-like, intestinal and tissue non-specific (liver/bone/kidney).,online information:Alkaline phosphatase entry,polymorphism:Placental ALP is highly polymorphic, there are at least three common alleles.,similarity:Belongs to the alkaline phosphatase family.,subunit:Homodimer.,

Validation Data



Various whole cell lysates were separated by 4-20% SDS-PAGE, and the membrane was blotted with anti-ALPP (ANT0084R) antibody. The HRPconjugated Goat anti-Rabbit IgG(H + L) antibody was used to detect the antibody. Lane 1: HeLa Lane 2: JAR Lane 3: Rat small intestine Predicted band size: 58kDa Observed band size: 70kDa

Human placenta was stained with anti-ALPP (ANT0084R) rabbit antibody



For Research use only, not for diagnostics and clinical use
Contact Antagene Inc Tel 1-866-964-2589 Email: info@antageneinc.com