



Mouse Monoclonal Antibody **ALPP** conjugated to Sepharose Beads

CatalogNo: **ANT8317-M**

Size 200ul

Storage Store at 4 °C for frequent use

Description

This Antagene antibody is immobilized by the covalent reaction of hydrazinonicotinamide-modified antibody with formylbenzamide-modified beads. It is useful for immunoprecipitation.

ALPP (ANT0084R) Rabbit mAb

Formulation: Each vial contains 1mg/ml Magnetic Bead in PBS, pH 7.2, 0.05mg ANaN3.

Host Species

- Rabbit
- Human, Mouse, Rat,

Reactivity

- WB, IHC, IF, IP, ELISA

Applications

MW

- 58kD (Calculated)
- 70kD (Observed)
- IgG, Kappa

Isotype

Recommended Dilution Ratios

IP

Basic Information

Clonality Monoclonal

Clone Number ANT0084R

Immunogen Information

Specificity Endogenous

Target Information

Gene name ALPP
Protein Name Alkaline phosphatase, placental type

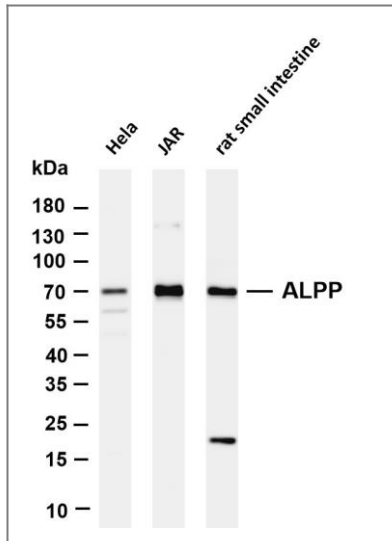
	Organism	Gene ID	UniProt ID
	Human	250 ;	P05187 ;

Cellular Membrane
Localization

Tissue specificity Detected in placenta (at protein level).

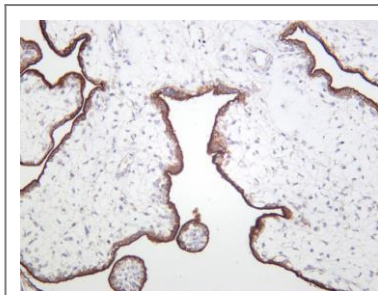
Function Catalytic activity:A phosphate monoester + H(2)O = an alcohol + phosphate.,cofactor:Bounds 1 magnesium ion.,cofactor:Bounds 2 zinc ions.,miscellaneous:In most mammals there are four different isozymes: placental, placental-like, intestinal and tissue non-specific (liver/bone/kidney).,online information:Alkaline phosphatase entry,polymorphism:Placental ALP is highly polymorphic, there are at least three common alleles.,similarity:Belongs to the alkaline phosphatase family.,subunit:Homodimer,

Validation Data



Various whole cell lysates were separated by 4-20% SDS-PAGE, and the membrane was blotted with anti-ALPP (ANT0084R) antibody. The HRPconjugated Goat anti-Rabbit IgG(H + L) antibody was used to detect the antibody. Lane 1: HeLa Lane 2: JAR Lane 3: Rat small intestine Predicted band size: 58kDa Observed band size: 70kDa

Human placenta was stained with anti-ALPP (ANT0084R) rabbit antibody



For Research use only, not for diagnostics and clinical use
Contact Antagene Inc Tel 1-866-964-2589 Email: info@antageneinc.com