

OCN (ANT0083R) Rabbit mAb

CatalogNo: ANT8316 **Recombinant** 

Formulation: PBS,50%glycerol,0.05%Proclin 300,0.05%BSA
Quantity : 100 ug/vial

Host Species

- Rabbit
- Human,Mouse,Rat,

Reactivity

- WB,IHC,IF,IP,ELISA

Applications

MW

- 59kD (Calculated)
- IgG,Kappa
- 65kD (Observed)

Isotype

Recommended Dilution Ratios

IHC 1:200-1:1000

WB 1:2000-1:10000

IF 1:200-1:1000

ELISA 1:5000-1:20000

IP 1:50-1:200

Storage

Storage* -15°C to -25°C/1 year(Do not lower than -25°C)

Basic Information

Clonality Monoclonal

Clone Number ANT0083R

Target Information

Endogenous

Gene name

Protein Name

OCN

Occludin;OCN

Organism	Gene ID	UniProt ID
Human	100506658 ;	Q16625 ;
Mouse		Q61146 ;
Rat		Q6P6T5 ;

Cellular

Localization

Membrane

Tissue specificity

Localized at tight junctions of both epithelial and endothelial cells. Highly expressed in kidney. Not detected in testis.

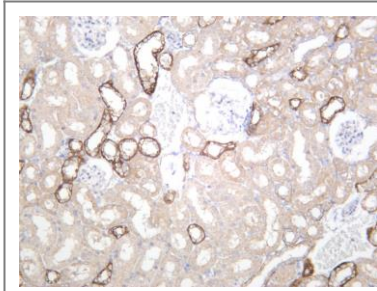
Function

protein complex assembly, cellular amino acid derivative metabolic process, sulfur metabolic process, nucleoside metabolic process, ribonucleoside metabolic process, purine nucleoside metabolic process, macromolecular complex subunit organization, purine ribonucleoside metabolic process, S-adenosylhomocysteine metabolic process, Sadenosylmethionine metabolic process, macromolecular complex assembly, protein complex biogenesis,



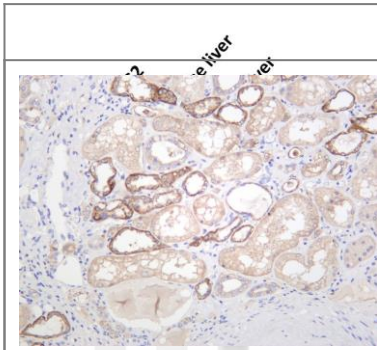
Validation Data

Rat kidney was stained with anti-OCN (ANT0083R) rabbit antibody

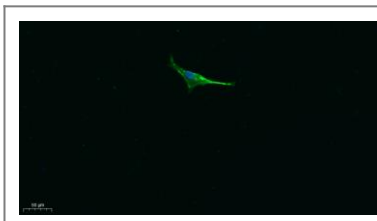
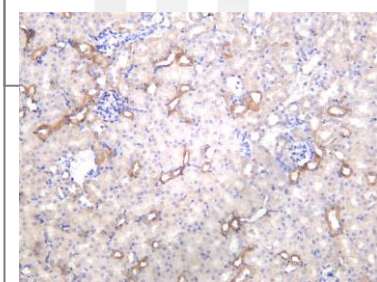


Various whole cell lysates were separated by 4-20% SDS-PAGE, and the membrane was blotted with anti-OCN (ANT0083R) antibody. The HRPconjugated Goat anti-Rabbit IgG(H + L) antibody was used to detect the antibody. Lane 1: HepG2 Lane 2: Mouse liver Lane 3: Rat liver Predicted band size: 59kDa Observed band size: 65kDa

Human kidney was stained with anti-OCN (ANT0083R) rabbit antibody



Mouse kidney was stained with anti-OCN (ANT0083R) rabbit antibody



Immunofluorescence analysis of A549. 1,primary Antibody was diluted at 1:200(4°C overnight). 2, Goat Anti Rabbit IgG (H&L) - Alexa Fluor 488 Secondary antibody was diluted at 1:1000(room temperature, 50min).3, Picture B: DAPI(blue) 10min.

For Research use only, not for diagnostics and clinical use
 Contact Antagene Inc Tel 1-866-964-2589 Email: info@antageneinc.com

