



LAMB1 (ANT0079R) Rabbit mAb

CatalogNo: ANT8312 **Recombinant R**

Formulation: PBS,50%glycerol,0.05%Proclin 300,0.05%BSA
Quantity : 100 ug/vial

Host Species

- Rabbit

MW

- 198kD (Calculated)
240kD (Observed)

Reactivity

- Human,Mouse,Rat,

Isotype

- IgG,Kappa

Applications

- WB,IHC,IF,IP,ELISA

Recommended Dilution Ratios

IHC 1:200-1:1000

WB 1:2000-1:10000

IF 1:200-1:1000

ELISA 1:5000-1:20000

IP 1:50-1:200

Storage

Storage* -15°C to -25°C/1 year(Do not lower than -25°C)

Basic Information

Clonality Monoclonal

Clone Number ANT0079R

Target Information

Endogenous

Gene name

LAMB1

Protein Name

Laminin subunit beta-1

Organism	Gene ID	UniProt ID
Human	3912;	P07942;
Mouse		P02469;

Cellular

Secreted

Localization

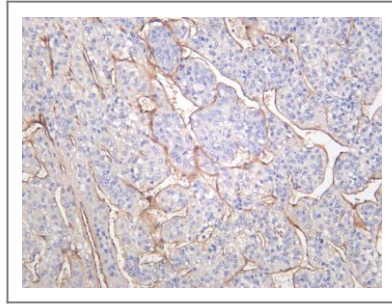
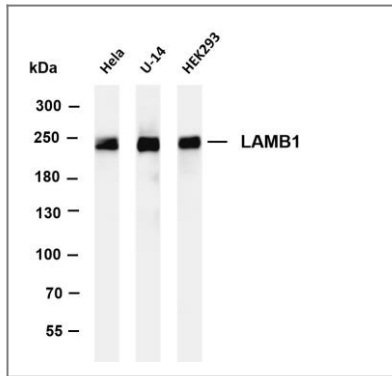
Tissue specificity

Colon,Liver,Muscle,Plasma,

Function

Domain:Domains VI and IV are globular.,Domain:The alpha-helical domains I and II are thought to interact with other laminin chains to form a coiled coil structure.,Function:Binding to cells via a high affinity receptor, laminin is thought to mediate the attachment, migration and organization of cells into tissues during embryonic development by interacting with other extracellular matrix components.,similarity:Contains 1 laminin IV type B domain.,similarity:Contains 1 laminin N-terminal domain.,similarity:Contains 13 laminin EGF-like domains.,subcellular location:Major component.,subunit:Laminin is a complex glycoprotein, consisting of three different polypeptide chains (alpha, beta, gamma), which are bound to each other by disulfide bonds into a cross-shaped molecule comprising one long and three short arms with globules at each end. Beta-1 is a subunit of laminin-1 (EHS laminin), laminin-2 (merosin), and laminin-6 (K-laminin).,

Validation Data



Various whole cell lysates were separated by 4-8% SDS-PAGE, and the membrane was blotted with anti- LAMB1 (ANT0079R) antibody. The HRPconjugated Goat anti-Rabbit IgG(H + L) antibody was used to detect the antibody. Lane 1: HeLa Lane 2: U-14 Lane 3: HEK293 Predicted band size:

198kDa Observed band size: 240kDa

Human hepatocellular carcinoma was stained with anti-LAMB1 (ANT0079R) rabbit antibody

For Research use only, not for diagnostics and clinical use
Contact Antagene Inc Tel 1-866-964-2589 Email: info@antageneinc.com