



## Mouse Monoclonal Antibody **LAMB1** conjugated to Sepharose Beads

CatalogNo: **ANT8312-S**

Size 200ul

Storage Store at 4 °C for frequent use

### Description

This Antagene antibody is immobilized via covalent binding of primary amino groups to N-hydroxysuccinimide (NHS)-activated sepharose beads. It is useful for immunoprecipitation assays.

### **LAMB1 (ANT0079R) Rabbit mAb**

Formulation: 50% slurry in PBS pH 7.2 with 0.01mg NaN<sub>3</sub> preservative.

#### Host Species

- Rabbit

#### MW

- 198kD (Calculated)
- 240kD (Observed)

#### Reactivity

- Human, Mouse, Rat,

#### Isotype

- IgG, Kappa

#### Applications

- WB, IHC, IF, IP, ELISA

## **Recommended Dilution Ratios**

### **IP**

## **Basic Information**

#### Clonality

Monoclonal

Clone Number      ANT0079R

Immunogen Information

Specificity      Endogenous

Gene name      LAMB1  
Protein Name      Laminin subunit beta-1

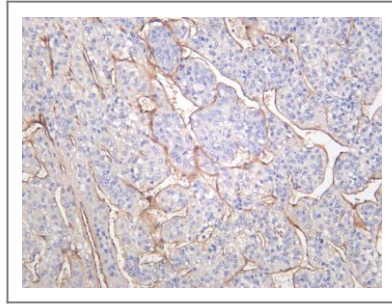
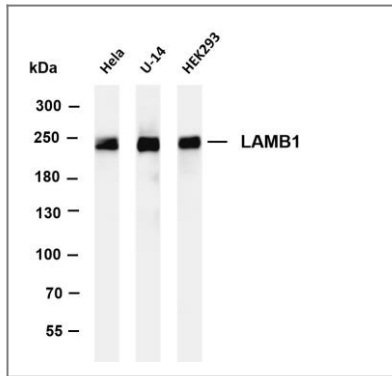
Organism	Gene ID	UniProt ID
Human	<a href="#">3912;</a>	<a href="#">P07942;</a>
Mouse		<a href="#">P02469;</a>

Cellular      Secreted  
Localization

Tissue specificity Colon,Liver,Muscle,Plasma,

Function      Domain:Domains VI and IV are globular.,Domain:The alpha-helical domains I and II are thought to interact with other laminin chains to form a coiled coil structure.,Function:Binding to cells via a high affinity receptor, laminin is thought to mediate the attachment, migration and organization of cells into tissues during embryonic development by interacting with other extracellular matrix components.,similarity:Contains 1 laminin IV type B domain.,similarity:Contains 1 laminin N-terminal domain.,similarity:Contains 13 laminin EGF-like domains.,subcellular location:Major component.,subunit:Laminin is a complex glycoprotein, consisting of three different polypeptide chains (alpha, beta, gamma), which are bound to each other by disulfide bonds into a cross-shaped molecule comprising one long and three short arms with globules at each end. Beta-1 is a subunit of laminin-1 (EHS laminin), laminin-2 (merosin), and laminin-6 (K-laminin).,

## Validation Data



Various whole cell lysates were separated by 4-8% SDS-PAGE, and the membrane was blotted with anti- LAMB1 (ANT0079R) antibody. The HRPconjugated Goat anti-Rabbit IgG(H + L) antibody was used to detect the antibody. Lane 1: HeLa Lane 2: U-14 Lane 3: HEK293 Predicted band size:

198kDa Observed band size: 240kDa

Human hepatocellular carcinoma was stained with anti-LAMB1 (ANT0079R) rabbit antibody

---

For Research use only, not for diagnostics and clinical use  
Contact Antagene Inc Tel 1-866-964-2589 Email: [info@antageneinc.com](mailto:info@antageneinc.com)