



Mouse Monoclonal Antibody **LAMB1** conjugated to Sepharose Beads

CatalogNo: **ANT8312-M**

Size 200ul

Storage Store at 4 °C for frequent use

Description

This Antagene antibody is immobilized by the covalent reaction of hydrazinonicotinamide-modified antibody with formylbenzamide-modified beads. It is useful for immunoprecipitation.

LAMB1 (ANT0079R) Rabbit mAb

Formulation: Each vial contains 1mg/ml Magnetic Bead in PBS, pH 7.2, 0.05mg ANaN3.

Host Species

- Rabbit

MW

- 198kD (Calculated)
- 240kD (Observed)

Reactivity

- Human, Mouse, Rat,

Isotype

- IgG, Kappa

Applications

- WB, IHC, IF, IP, ELISA

Recommended Dilution Ratios

IP

Basic Information

Clonality

Monoclonal

Clone Number ANT0079R

Immunogen Information

Specificity Endogenous

Gene name LAMB1
Protein Name Laminin subunit beta-1

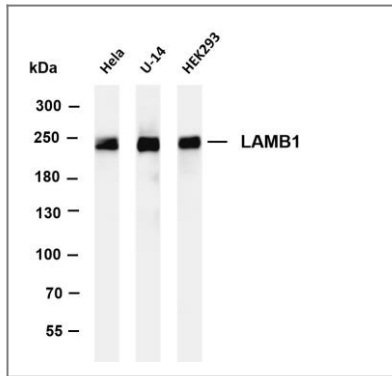
Organism	Gene ID	UniProt ID
Human	3912;	P07942;
Mouse		P02469;

Cellular Secreted
Localization

Tissue specificity Colon,Liver,Muscle,Plasma,

Function Domain:Domains VI and IV are globular.,Domain:The alpha-helical domains I and II are thought to interact with other laminin chains to form a coiled coil structure.,Function:Binding to cells via a high affinity receptor, laminin is thought to mediate the attachment, migration and organization of cells into tissues during embryonic development by interacting with other extracellular matrix components.,similarity:Contains 1 laminin IV type B domain.,similarity:Contains 1 laminin N-terminal domain.,similarity:Contains 13 laminin EGF-like domains.,subcellular location:Major component.,subunit:Laminin is a complex glycoprotein, consisting of three different polypeptide chains (alpha, beta, gamma), which are bound to each other by disulfide bonds into a cross-shaped molecule comprising one long and three short arms with globules at each end. Beta-1 is a subunit of laminin-1 (EHS laminin), laminin-2 (merosin), and laminin-6 (K-laminin).,

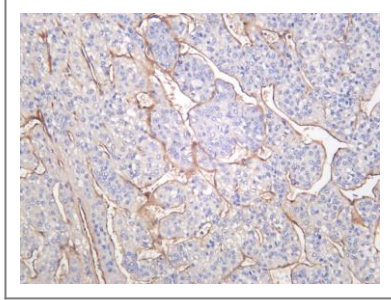
Validation Data



Various whole cell lysates were separated by 4-8% SDS-PAGE, and the membrane was blotted with anti- LAMB1 (ANT0079R) antibody. The HRPconjugated Goat anti-Rabbit IgG(H + L) antibody was used to detect the antibody. Lane 1: HeLa Lane 2: U-14 Lane 3: HEK293 Predicted band size:

198kDa Observed band size: 240kDa

Human hepatocellular carcinoma was stained with anti-LAMB1 (ANT0079R) rabbit antibody



For Research use only, not for diagnostics and clinical use
Contact Antagene Inc Tel 1-866-964-2589 Email: info@antageneinc.com