



Mouse Monoclonal Antibody **SPTBN1** conjugated to Sepharose Beads

CatalogNo: **ANT8310-S**

Size 200ul

Storage Store at 4 °C for frequent use

Description

This Antagene antibody is immobilized via covalent binding of primary amino groups to N-hydroxysuccinimide (NHS)-activated sepharose beads. It is useful for immunoprecipitation assays.

SPTBN1 (ANT0077R) Rabbit mAb

Formulation: 50% slurry in PBS pH 7.2 with 0.01mg NaN3a3 preservative.

Host Species

- Rabbit

MW

- 275kD (Calculated)
- 275kD (Observed)

Reactivity

- Human,Mouse,Rat,

Isotype

- IgG,Kappa

Applications

- WB,IHC,IF,IP,ELISA

Recommended Dilution Ratios

IP

Basic Information

Clonality Monoclonal

Clone Number ANT0077R

Immunogen Information

Specificity Endogenous

Gene name SPTBN1

Protein Name Spectrin beta chain non-erythrocytic 1

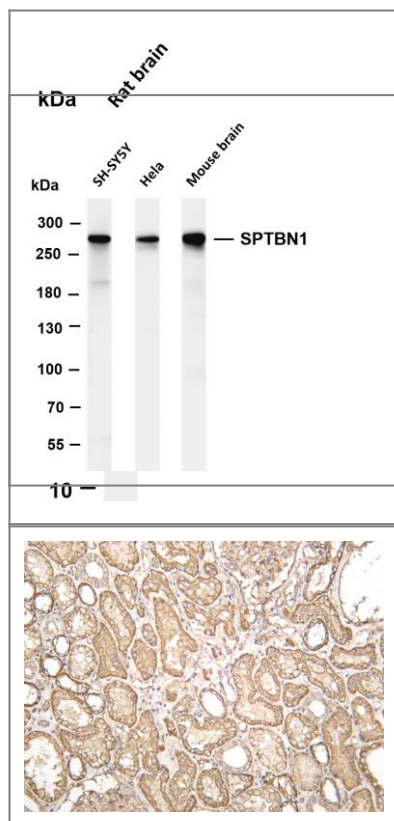
Organism	Gene ID	UniProt ID
Human	6711 ;	Q01082 ;
Mouse	20742 ;	Q62261 ;

Cellular Localization Cytoplasm, Membrane

Tissue specificity Isoform 2 is present in brain, lung and kidney (at protein level).

Function: Fodrin, which seems to be involved in secretion, interacts with calmodulin in a calcium-dependent manner and is thus candidate for the calcium-dependent movement of the cytoskeleton at the membrane.,ANTM:Isoform 2 is phosphorylated on Ser-8 and Ser-10.,similarity:Belongs to the spectrin family.,similarity:Contains 1 PH domain.,similarity:Contains 17 spectrin repeats.,similarity:Contains 2 CH (calponin homology) domains.,subcellular location:Colocalizes with ANK2 in a distinct intracellular compartment of neonatal cardiomyocytes.,subunit:Like erythrocyte spectrin, the spectrinlike proteins are capable to form dimers which can further associate to tetramers. The short form cannot bind to the axonal protein fodaxin. Interacts with ANK2.,tissue specificity:Isoform 2 is present in brain, lung and kidney (at protein level).,

Validation Data

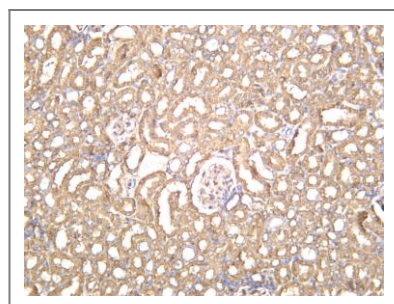


Various whole cell lysates were separated by 4-20% SDS-PAGE, and the membrane was blotted with anti-SPTBN1 (ANT0077R) antibody. The HRPconjugated Goat anti-Rabbit IgG(H + L) antibody was used to detect the antibody. Lane 1: Rat brain Predicted band size: 275kDa Observed band size:

275kDa

Various whole cell lysates were separated by 4-8% SDS-PAGE, and the membrane was blotted with anti-SPTBN1 (ANT0047R) antibody. The HRPconjugated Goat anti-Rabbit IgG(H + L) antibody was used to detect the antibody. Lane 1: SH-SY5Y Lane 2: Hela Lane 3: Mouse brain Predicted band size: 275kDa Observed band size: 275kDa

Human kidney was stained with anti-SPTBN1 (ANT0077R) rabbit antibody



Rat kidney was stained with anti-SPTBN1 (ANT0077R) rabbit antibody

For Research use only, not for diagnostics and clinical use
Contact Antagene Inc Tel 1-866-964-2589 Email: info@antageneinc.com